

Printview: Male connector; with fixing flanges; 6-pole; pin spacing 5.08 mm / 0.2 in; for screw or similar mounting types; for parallel or perpendicular mounting - Item No.: 231-636/019-000

**WAGO**® online catalog / eShop

**Male connector; with fixing flanges; 6-pole; pin spacing 5.08 mm / 0.2 in; for screw or similar mounting types; for parallel or perpendicular mounting**

Item No.: 231-636/019-000



Male connector; with fixing flanges; 6-pole; pin spacing 5.08 mm / 0.2 in; for screw or similar mounting types; for parallel or perpendicular mounting

## Marking

RoHS ✓  
Compliant

## Business data

Supplier	WAGO
Item no.	231-636/019-000
EAN	4044918260145
Content	1
Order amount	50
Customer item number	

## Notes

Universal connection for all conductor types  
Easy cable pre-assembly and on-unit wiring via vertical and horizontal  
CAGE CLAMP® actuation  
For "wire-to-wire" and "board-to-wire" connections  
Coding option available

## Technical data

### Miscellaneous

No. of Poles	6
Total number of connection points	6
Total number of potentials	6
Color	orange
Ratings according to 1	IEC/EN 60664-1
Overvoltage category EN 1	III
Pollution degree (1)	2

Technical data	
Rated voltage EN (1) [V]	320 [V]
Rated surge voltage (1) [kV]	4 [kV]
Nominal current [A]	12 [A]
Overvoltage category EN 2	II
Degree of pollution (2)	2
Rated voltage EN (2) [V]	630 [V]
Bemessungsstossspannung (2) [kV]	4 [kV]
Nominal current (2) [A]	12 [A]
Overvoltage category EN 3	III
Degree of pollution (3)	3
Rated voltage EN (3) [V]	320 [V]
Rated surge voltage (3) [kV]	4 [kV]
Nominal current (3) [A]	12 [A]
Connection technology (1)	CAGE CLAMP®
Conductor type (1)	solid
Cross section from (1) [mm <sup>2</sup> ]	0.08 [mm <sup>2</sup> ]
Cross section up to (1) [mm <sup>2</sup> ]	2.5 [mm <sup>2</sup> ]
Cross section from (1) [AWG]	28 [AWG]
Cross section up to (1) [AWG]	12 [AWG]
Conductor type (2)	fine-stranded
Cross section from (2) [mm <sup>2</sup> ]	0.08 [mm <sup>2</sup> ]
Cross section up to (2) [mm <sup>2</sup> ]	2.5 [mm <sup>2</sup> ]
Conductor type (3)	fine-stranded (with insulated ferrule)
Cross section from (3) [mm <sup>2</sup> ]	0.25 [mm <sup>2</sup> ]
Cross section up to (3) [mm <sup>2</sup> ]	1.5 [mm <sup>2</sup> ]
Conductor type (4)	fine-stranded (with uninsulated ferrule)
Cross section from (4) [mm <sup>2</sup> ]	0.25 [mm <sup>2</sup> ]
Cross section up to (4) [mm <sup>2</sup> ]	2.5 [mm <sup>2</sup> ]
Stripped length from (1) [mm]	8 [mm]
Stripped length up to (1) [mm]	9 [mm]
Strip length from [inch] [in]	0.31 [in]
Strip length up to [inch] [in]	0.35 [in]
Stripped length (1) [in]	0.33 [in]
Material group	I

Printview: Male connector; with fixing flanges; 6-pole; pin spacing 5.08 mm / 0.2 in; for screw or similar mounting types; for parallel or perpendicular mounting - Item No.: 231-636/019-000

Technical data	
Insulating material	Polyamide 6.6 (PA 6.6)
Flammability rating per UL 94	V0
Lower limit temperature [C]	-60 [C]
Upper temperature limit [C]	100 [C]
Clamping spring material	Chrome-nickel spring steel (CrNi)
Contact material	Electrolytic copper (Ecu)
Contact plating	tin-plated
Fire load [MJ]	0.182 [MJ]
Weight [g]	10.27 [g]
Width [mm]	45.28 [mm]
Width [in]	1.783 [in]
Height [mm]	14.3 [mm]
Height [in]	0.563 [in]
Length [mm]	27.5 [mm]
Length [in]	1.083 [in]
Pin spacing from [mm]	5.08 [mm]
Pin spacing up to [mm]	5.08 [mm]
Pin spacing from [in]	0.2 [in]
Pin spacing up to [in]	0.2 [in]

Approbation					
Item No.	Registration	Registration no.	Voltage [V]	Current [A]	Cross section [mm <sup>2</sup> , AWG]
231-636/019-000	ABS	04-HG469925/1-PDA	400	12	0,08-2,5
231-636/019-000	BV	11915/A0	400	16	2,5
231-636/019-000	CCA	5764	250	12	0,08-2,5
231-636/019-000	CSA	154112-1466354	300	15	22-12
231-636/019-000	GL	17296-00HH	400	12	0,08-2,5
231-636/019-000	KEMA	2083746.02	250	12	0,08-2,5
231-636/019-000	KR	HMB05880-EL003	250/400	12/16	2,5
231-636/019-000	LR	96/20035	400	12	0,08-2,5
231-636/019-000	RMR	11130002	400	12	0,08-2,5
231-636/019-000	UL	E45171	600	15	28-12

Printview: Male connector; with fixing flanges; 6-pole; pin spacing 5.08 mm / 0.2 in; for screw or similar mounting types; for parallel or perpendicular mounting - Item No.: 231-636/019-000

### Approbation

231-636/019-000	UL	E45172	300	15	22-12
-----------------	----	--------	-----	----	-------

### Accessories

#### Insulation stop

Item no.	Description	Pack. unit (Sub Pack)
231-670	Insulation stop; 0.08-0.2 mm <sup>2</sup> / 0.2 mm <sup>2</sup> "s"	200
231-671	Insulation stop; 0.25 - 0.5 mm <sup>2</sup>	25
231-672	Insulation stop; 0.75 - 1 mm <sup>2</sup>	25

#### Jumper

Item no.	Description	Pack. unit (Sub Pack)
231-902	Comb-style jumper bar; for 5 mm and 5.08 mm pin spacing; reduces conductor size to 1.5 mm <sup>2</sup>	25
231-903	Comb-style jumper bar; 3-way; suitable for 231 Series female connectors; with 5 mm pin spacing; insulated	25
231-905	Comb-style jumper bar; 5-way; suitable for 231 Series female connectors; with 5 mm pin spacing; insulated	25
231-907	Comb-style jumper bar; 7-way; suitable for 231 Series female connectors; with 5 mm pin spacing; insulated	25
231-910	Comb-style jumper bar; 10-way; suitable for 231 Series female connectors; with 5 mm pin spacing; insulated	25

#### Coding

Item no.	Description	Pack. unit (Sub Pack)
231-129	Coding key; snap-on type	100

#### Strain relief

Item no.	Description	Pack. unit (Sub Pack)
232-636	Snap-on type strain relief housing; consists of strain relief support and housing; 6-pole; suitable for 5.08 mm pin spacing	25

Printview: Male connector; with fixing flanges; 6-pole; pin spacing 5.08 mm / 0.2 in; for screw or similar mounting types; for parallel or perpendicular mounting - Item No.: 231-636/019-000

## Accessories

### Counterpart

Item no.	Description	Pack. unit (Sub Pack)
2231-306/008-000	Female connector; with snap-in mounting feet; 6-pole; with integrated push-buttons; pin spacing 5.08 mm / 0.2 in; codable; with 2 latches; Plate thickness 0.6x1.2 mm	50
2231-306/026-000	Female connector; with integrated push-buttons; 6-pole; pin spacing 5.08 mm / 0.2 in; codable; with 2 latches	50
2231-306/031-000	Female connector; with fixing flanges; 6-pole; with integrated push-buttons; pin spacing 5.08 mm / 0.2 in; codable; with 2 latches	50
2231-306/037-000	Female connector; with locking levers; 6-pole; with integrated push-buttons; pin spacing 5.08 mm / 0.2 in; codable; with 2 latches	50
2231-306/102-000	Female connector; with integrated end plate; 6-pole; with integrated push-buttons; pin spacing 5.08 mm / 0.2 in; codable; with 2 latches	50
2231-306/107-000	Female connector; with screw flange; 6-pole; with integrated push-buttons; pin spacing 5.08 mm / 0.2 in; codable; with 2 latches	50
231-2306/026-000	2-conductor female connector; 6-pole; pin spacing 5.08 mm / 0.2 in; codable; with 2 latches	50
231-2306/037-000	2-conductor female connector; with locking levers; 6-pole; pin spacing 5.08 mm / 0.2 in; codable; with 2 latches	50
231-306/008-000	Female connector; with snap-in mounting foot; 6-pole; pin spacing 5.08 mm / 0.2 in; with coding finger; with latch; Plate thickness 0.6x1.2 mm; Fixing holes 3.5 mm Ø	50
231-306/026-000	Female connector; with coding finger; with latch; 6-pole; Pin spacing 5.08 mm / 0.2 in	50
231-306/027-000	Female connector; with fixing flanges; 6-pole; pin spacing 5.08 mm / 0.2 in; with coding finger; with latch; with reinforcing strips; for racks and feedthrough connections	50
231-306/031-000	Female connector; with fixing flanges; 6-pole; pin spacing 5.08 mm / 0.2 in; with coding finger; with latch; for panel mounting; for screw or similar mounting types	50
231-306/037-000	Female connector; with lateral locking levers; 6-pole; pin spacing 5.08 mm / 0.2 in; with coding finger; with latch	50
231-306/102-000	Female connector; with integrated end plate; 6-pole; pin spacing 5.08 mm / 0.2 in; with coding finger; with latch	50
231-306/107-000	Female connector; with screw flange; 6-pole; pin spacing 5.08 mm / 0.2 in; with coding finger; with latch	50
232-166	Female connector; with straight solder pins; 6-pole; pin spacing 5.08 mm / 0.2 in; solder pin 0.6x1 mm; codable; Vertical PCB mounting; with 2 locking latches	50
232-166/031-000	Female connector; with straight solder pins; 6-pole; with feedthrough flanges; pin spacing 5.08 mm / 0.2 in; solder pin 0.6x1 mm; codable; Vertical PCB mounting	50

**Accessories**

232-166/039-000	Female connector; with straight solder pins; 6-pole; with locking levers; pin spacing 5.08 mm / 0.2 in; solder pin 0.6x1 mm; codable; Vertical PCB mounting	50
232-166/047-000	Female connector; with straight solder pins; 6-pole; with spacers; pin spacing 5.08 mm / 0.2 in; solder pin 0.6x1 mm; codable; Vertical PCB mounting	50
232-266	Female connector; with angled solder pins; 6-pole; pin spacing 5.08 mm / 0.2 in; solder pin 0.6x1 mm; codable; Horizontal PCB mounting; with 2 locking latches	50
232-266/031-000	Female connector; with angled solder pins; 6-pole; with feedthrough flanges; pin spacing 5.08 mm / 0.2 in; solder pin 0.6x1 mm; codable; Horizontal PCB mounting	50
232-266/039-000	Female connector; with angled solder pins; 6-pole; with locking levers; pin spacing 5.08 mm / 0.2 in; solder pin 0.6x1 mm; codable; Horizontal PCB mounting	50
232-266/047-000	Female connector; with angled solder pins; 6-pole; with spacers; pin spacing 5.08 mm / 0.2 in; solder pin 0.6x1 mm; codable; Horizontal PCB mounting	50
232-306/026-000	Angled female connector; 6-pole; pin spacing 5.08 mm / 0.2 in; codable; with 2 locking latches; Conductor exit opposite to latches	50
232-406/026-000	Angled female connector; 6-pole; pin spacing 5.08 mm / 0.2 in; codable; with 2 locking latches; conductor exit same direction as latches	50

Printview: Male connector; with fixing flanges; 6-pole; pin spacing 5.08 mm / 0.2 in; for screw or similar mounting types; for parallel or perpendicular mounting - Item No.: 231-636/019-000

## Accessories

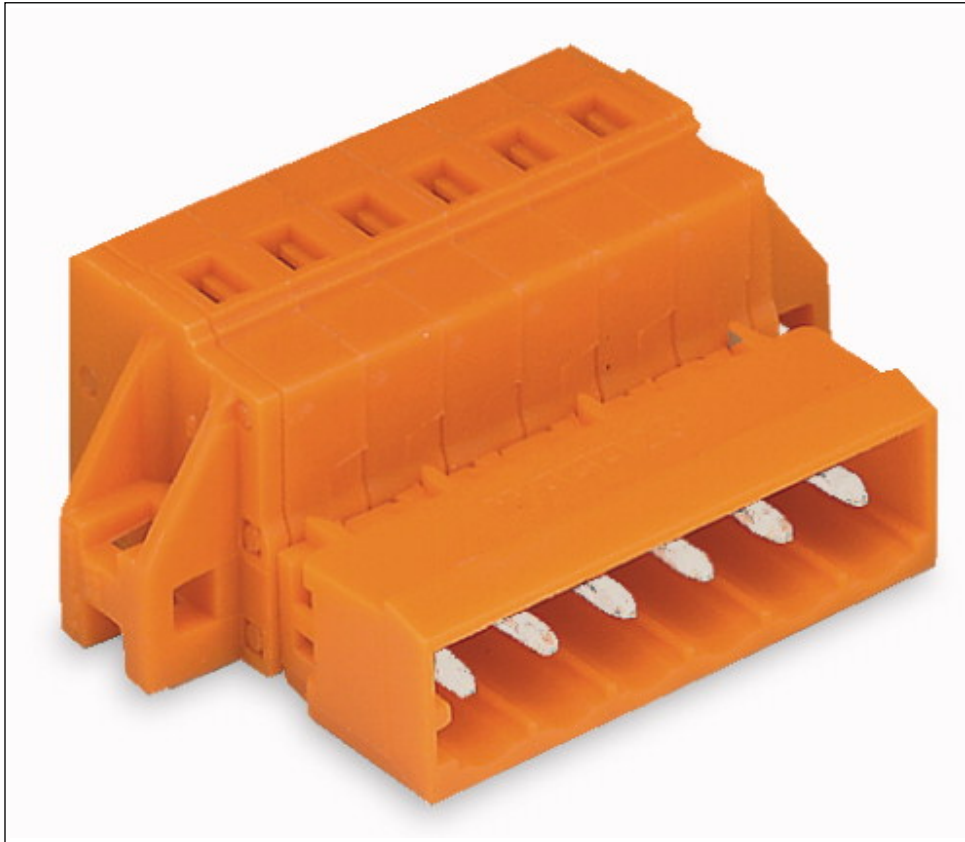
### General accessory

Item no.	Description	Pack. unit (Sub Pack)
209-132	Operating tool; for connecting comb-style jumper bar; 2-way; of insulating material	1
209-147	Self-tapping screw	100
210-199	Stickers for operating instructions; for multi connection system	100
210-657	Operating tool with partially insulated shaft; blade (3.5 x 0.5) mm; short; suitable for 260, 261, 262, 264, 270, 280, 281, 869, 870 and 880 Series	1
210-658	Operating tool with partially insulated shaft; blade (3.5 x 0.5) mm; short; angled; particularly suitable for 280 Series actuator and sensor terminal blocks and also for Series 260, 261, 262, 264, 280, 281, 869, 870, 880, 2002,	1
210-720	Operating tool with partially insulated shaft; Type 2, blade (3.5 x 0.5) mm; suitable for 260, 261, 262, 264, 270, 280, 281, 290, 775, 776, 777, 769, 780, 781, 869, 870, 880, 2002, 2003, 2004, 2005 and 2022 Series	1
231-131	Push-button; for female and male connectors; loose	25
231-159	Operating tool; for male and female connectors with CAGE CLAMP®; of Series 231, 232, 721, 722, 723, 731, 732	25
231-231	Combination operating tool; for male and female connectors with CAGE CLAMP®	25
231-291	Operating tool; for male and female connectors with CAGE CLAMP®; loose	25
231-500	Spacer; for formation of groups	100
231-669	Lockout caps; for covering unused clamping units	100

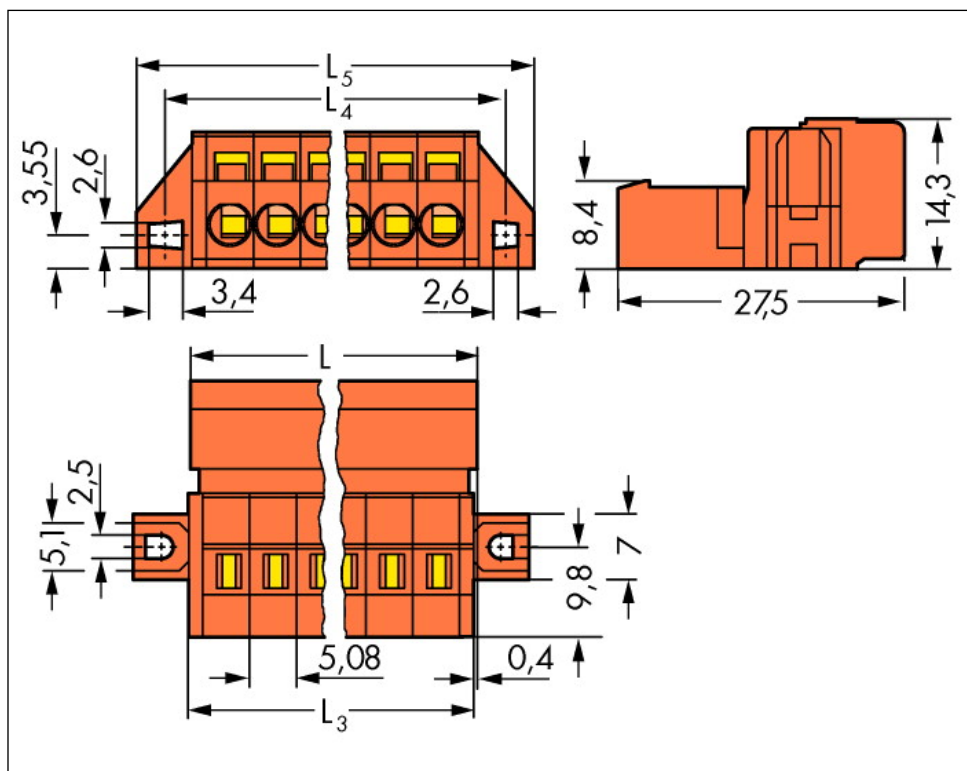
Printview: Male connector; with fixing flanges; 6-pole; pin spacing 5.08 mm / 0.2 in; for screw or similar mounting types; for parallel or perpendicular mounting - Item No.: 231-636/019-000

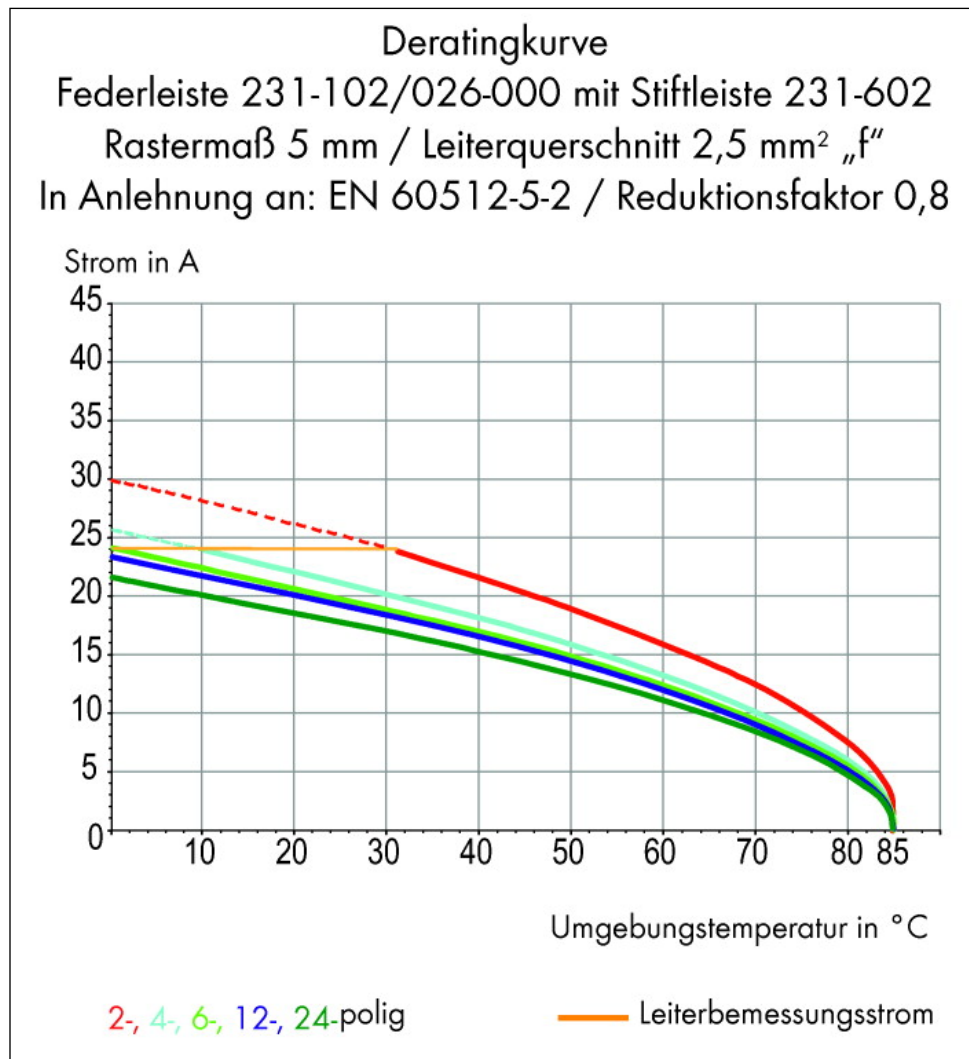
---

**Images & drawings**



Printview: Male connector; with fixing flanges; 6-pole; pin spacing 5.08 mm / 0.2 in; for screw or similar mounting types; for parallel or perpendicular mounting - Item No.: 231-636/019-000





#### Address

WAGO Kontakttechnik GmbH & Co. KG

Hansastr. 27

32423 Minden

Telefon: 0571/887-0

Fax: 0571/887-169

<http://www.wago.com>

© WAGO Kontakttechnik GmbH & Co. KG

Technische Änderungen und Irrtümer vorbehalten.