



[AST](#) | [AST4300](#)

TE Internal #: 11190676-00

TE Internal Description: 30 BAR, 1/4MNPT, 4-20MA, DIN 43650-A, 31

Non-Incendive Pressure Transducer

[View on TE.com >](#)

[Sensors](#) > [Pressure Sensors](#) > [Pressure Transducers](#) > [Non-Incendive Pressure Transducer](#)



Pressure Sensor Type: **Industrial Pressure Transducer**

Pressure Type: **Gauge**

Hazardous Area Approval: **Non-Incendive**

Output Signal Type: **4 – 20 mA**

Pressure: **30 bar [435.11 psi]**

[All Non-Incendive Pressure Transducer \(103\)](#)

Features

Product Type Features

Pressure Sensor Type	Industrial Pressure Transducer
Pressure Type	Gauge

Configuration Features

Electrical Connection	Conduit 10 ft
-----------------------	---------------

Electrical Characteristics

Supply Voltage Range	10 – 28 V
----------------------	-----------

Body Features

Port Material	316L
---------------	------

Usage Conditions

Pressure	30 bar[435.11 psi]
----------	--------------------

Operation/Application

Output Signal Type	4 – 20 mA
Proof Pressure Range	2X, Min
Pressure Accuracy	±0.25% FSO

Industry Standards



Compatible With Agency/Standards Products	UL
Hazardous Area Approval	Non-Incendive

Other

Sensor Options	None
Port Fitting	1/4 MNPT

Product Compliance

[For compliance documentation, visit the product page on TE.com>](#)

EU RoHS Directive 2011/65/EU	Not Yet Reviewed
EU ELV Directive 2000/53/EC	Compliant with Exemptions
China RoHS 2 Directive MIIT Order No 32, 2016	未针对中国 RoHS 符合性进行审核 Not reviewed for China RoHS compliance
EU REACH Regulation (EC) No. 1907/2006	Current ECHA Candidate List: JUNE 2025 (250) Not Yet Reviewed
Halogen Content	Not Yet Reviewed for halogen content
Solder Process Capability	Not reviewed for solder process capability

Product Compliance Disclaimer

This information is provided based on reasonable inquiry of our suppliers and represents our current actual knowledge based on the information they provided. This information is subject to change. The part numbers that TE has identified as EU RoHS compliant have a maximum concentration of 0.1% by weight in homogenous materials for lead, hexavalent chromium, mercury, PBB, PBDE, DBP, BBP, DEHP, DIBP, and 0.01% for cadmium, or qualify for an exemption to these limits as defined in the Annexes of Directive 2011/65/EU (RoHS2). Finished electrical and electronic equipment products will be CE marked as required by Directive 2011/65/EU. Components may not be CE marked. Additionally, the part numbers that TE has identified as EU ELV compliant have a maximum concentration of 0.1% by weight in homogenous materials for lead, hexavalent chromium, and mercury, and 0.01% for cadmium, or qualify for an exemption to these limits as defined in the Annexes of Directive 2000/53/EC (ELV). Regarding the REACH Regulations, TE's information on SVHC in articles for this part number is still based on the European Chemical Agency (ECHA) 'Guidance on requirements for substances in articles' (Version: 2, April 2011), applying the 0.1% weight on weight concentration threshold at the finished product level. TE is aware of the European Court of Justice ruling of September 10th, 2015 also known as O5A (Once An Article Always An Article) stating that, in case of 'complex object', the threshold for a SVHC must be applied to both the product as a whole and simultaneously to each of the articles forming part of its composition. TE has evaluated this ruling based on the new ECHA "Guidance on requirements for substances in articles" (June 2017, version 4.0) and will be updating its statements accordingly.

Also in the Series | [AST4300](#)

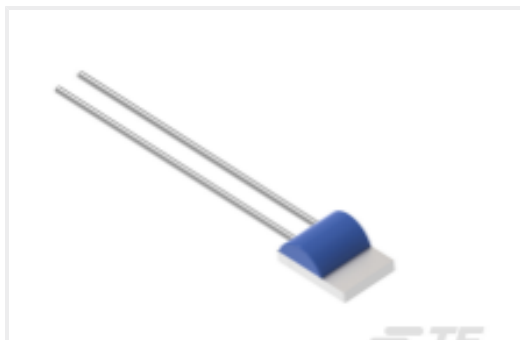


Industrial Pressure Transducers(103)



Pressure Transducers(103)

Customers Also Bought



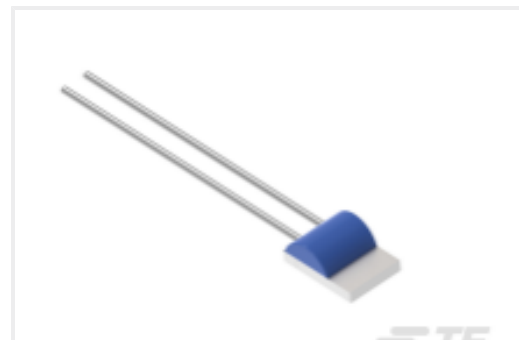
TE Part #NB-PTCO-159
Pt100, 2.0x2.3, Class C, PTFC101C1A0



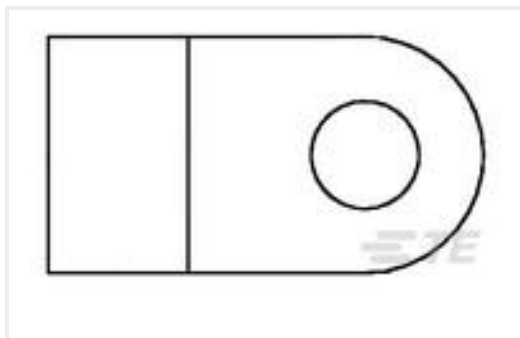
TE Part #86-100G-R
100 PSIG RIBBON CABLE MV
PRESSURE SENSOR



TE Part #CJ1465-000
55AC8113-22-9/96-9-9CS2275



TE Part #NB-PTCO-163
Pt1000, 2.0x2.3, Class C, PTFC102C1A0



TE Part #132005-1
STRATO-THERM, HR, FLAG, 12-10, M4
(#8)



TE Part #1-1625893-4
5W SM M/OX 2% 27R



TE Part #7-1879350-5
RR01 5% 270R AMMO



TE Part #4-1879355-9
RR03 5% 430K AMMO



TE Part #1-1879447-8
TE 200W 27R 5% Bracket



TE Part #2-2329383-5
PB ON/OFF FC BLU M1 TERM IP68

Documents

[CAD Files](#)

[3D PDF](#)

[3D](#)

[Customer View Model](#)

[ENG_CVM_CVM_11190676-00_A.2d_dxf.zip](#)

[English](#)

[Customer View Model](#)

[ENG_CVM_CVM_11190676-00_A.3d_igs.zip](#)



English

Customer View Model

[ENG_CVM_CVM_11190676-00_A.3d_stp.zip](#)

English

By downloading the CAD file I accept and agree to the [Terms and Conditions](#) of use.

Datasheets & Catalog Pages

[AST4300 Pressure Transducer Datasheet](#)

English