



AST | AST4300

TE Internal #: 11190675-00

Industrial Pressure Transducer, Gauge, 4 – 20 mA Output Signal, 2X, Min Proof Pressure Range, AST4300

[View on TE.com >](#)

Sensors > Pressure Sensors > Pressure Transducers > Non-Incendive Pressure Transducer



Pressure Sensor Type: **Industrial Pressure Transducer**

Pressure Type: **Gauge**

Hazardous Area Approval: **Non-Incendive**

Output Signal Type: **4 – 20 mA**

Pressure: **10 bar [145.03 psi]**

[All Non-Incendive Pressure Transducer \(103\)](#)

Features

Product Type Features

| | |
|----------------------|--------------------------------|
| Pressure Sensor Type | Industrial Pressure Transducer |
| Pressure Type | Gauge |

Configuration Features

| | |
|-----------------------|------------|
| Electrical Connection | DIN 43650A |
|-----------------------|------------|

Electrical Characteristics

| | |
|----------------------|-----------|
| Supply Voltage Range | 10 – 28 V |
|----------------------|-----------|

Body Features

| | |
|---------------|------|
| Port Material | 316L |
|---------------|------|

Dimensions

| | |
|------------------|-------------------|
| Product Diameter | 22.22 mm[.875 in] |
| Product Length | 90.42 mm[3.56 in] |

Usage Conditions

| | |
|-----------------------------|---------------------------|
| Pressure | 10 bar[145.03 psi] |
| Operating Temperature Range | -40 – 80 °C[-40 – 176 °F] |

Operation/Application

| | |
|--------------------|-----------|
| Output Signal Type | 4 – 20 mA |
|--------------------|-----------|



| | |
|----------------------|------------|
| Proof Pressure Range | 2X, Min |
| Pressure Accuracy | ±0.25% FSO |

Industry Standards

| | |
|---|---------------|
| Compatible With Agency/Standards Products | UL |
| Hazardous Area Approval | Non-Incendive |

Other

| | |
|----------------|--------------------------|
| Sensor Options | Increased Proof Pressure |
| Port Fitting | 1/4 MNPT |

Product Compliance

[For compliance documentation, visit the product page on TE.com>](#)

| | |
|---|---|
| EU RoHS Directive 2011/65/EU | Compliant with Exemptions |
| EU ELV Directive 2000/53/EC | Compliant with Exemptions |
| China RoHS 2 Directive MIIT Order No 32, 2016 | 有害物质含量超出标准 Restricted Substance(s) Above Threshold |
| EU REACH Regulation (EC) No. 1907/2006 | Current ECHA Candidate List: JUNE 2025 (250) Candidate List Declared Against: JUNE 2025 (250) SVHC > Threshold: 2-methyl-1-(4-methylthiophenyl)-2-morpholinopropan-1-one (3.9% in 17980139677) Pb (80.3% in Component Part) Article Safe Usage Statements: Do not eat, drink or smoke when using this product. Wash thoroughly after handling. Recycle if possible and dispose of the article by following all applicable governmental regulations relevant to your geographic location. |
| Halogen Content | Not Yet Reviewed for halogen content |
| Solder Process Capability | Not reviewed for solder process capability |

Product Compliance Disclaimer

This information is provided based on reasonable inquiry of our suppliers and represents our current actual knowledge based on the information they provided. This information is subject to change. The part numbers that TE has identified as EU RoHS compliant have a maximum concentration of 0.1% by weight in homogenous materials for lead, hexavalent chromium, mercury, PBB, PBDE, DBP, BBP, DEHP, DIBP, and 0.01% for cadmium, or qualify for an exemption to these limits as defined in the Annexes of Directive 2011/65/EU (RoHS2). Finished electrical and electronic equipment products will be CE marked as required by Directive 2011/65/EU. Components may not be CE marked. Additionally, the part numbers that TE has identified as EU ELV compliant have a maximum concentration of 0.1% by weight in homogenous materials for lead, hexavalent chromium, and mercury, and 0.01% for cadmium, or qualify for an exemption to these limits as defined in the Annexes of Directive 2000/53/EC (ELV). Regarding the REACH Regulations, TE's information on SVHC in articles for this part number is still based on the European Chemical Agency (ECHA) 'Guidance on requirements for substances in articles' (Version: 2, April 2011), applying the 0.1% weight on weight concentration threshold at the finished product level. TE is aware of the European Court of Justice ruling of September 10th, 2015 also known as O5A (Once An Article Always An Article) stating that, in case of 'complex object', the threshold for a SVHC must be applied to both the product as a whole and simultaneously to each of the articles forming part of its composition. TE has evaluated this ruling

based on the new ECHA "Guidance on requirements for substances in articles" (June 2017, version 4.0) and will be updating its statements accordingly.

Compatible Parts



TE Part # CAT-PTT0043
Non-Incendive Pressure Transducer

Also in the Series | **AST4300**



Industrial Pressure Transducers(103)

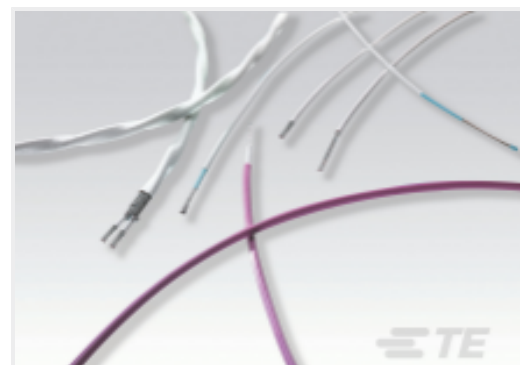


Pressure Transducers(103)

Customers Also Bought



TE Part #86-100G-R
100 PSIG RIBBON CABLE MV
PRESSURE SENSOR



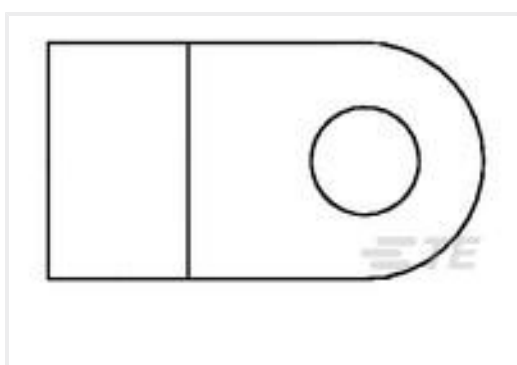
TE Part #CJ1465-000
55AC8113-22-9/96-9-9CS2275



TE Part #NB-PTCO-163
Pt1000, 2.0x2.3, Class C, PTFC102C1A0



TE Part #NB-PTCO-159
Pt100, 2.0x2.3, Class C, PTFC101C1A0



TE Part #132005-1
STRATO-THERM, HR, FLAG, 12-10, M4
(#8)



TE Part #1-1625893-4
5W SM M/OX 2% 27R
(#8)



TE Part #7-1879350-5
RR01 5% 270R AMMO



TE Part #4-1879355-9
RR03 5% 430K AMMO



Documents

CAD Files

[3D PDF](#)

3D

Customer View Model

[ENG_CVM_CVM_11190675-00_A.2d_dxf.zip](#)

English

Customer View Model

[ENG_CVM_CVM_11190675-00_A.3d_igs.zip](#)

English

Customer View Model

[ENG_CVM_CVM_11190675-00_A.3d_stp.zip](#)

English

By downloading the CAD file I accept and agree to the [Terms and Conditions](#) of use.

Datasheets & Catalog Pages

[AST4300 Pressure Transducer Datasheet](#)

English