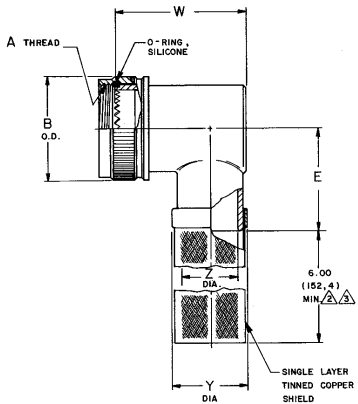


REVISIONS			
LTN	DESCRIPTION	DATE	APPROVED
A	REVISED PER ECN AP-7	7/27/94	[Signature]
B	REVISED PER ECN AP-11	9-5-94	[Signature]

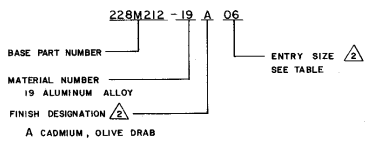


BASE PART NUMBER	SHELL SIZE Δ	ENTRY SIZE Δ	A		B	E	W	Y	Z
			R. H. THREAD CLASS	2B	MAX. O. D.	MAX.	REF.	DIA. REF.	DIA. $\pm .020$ (± 0.52)
228M208	8	04	.438	-28 UNEF	.688 (17.48)	.938 (23.83)	.870 (22.10)	.457 (11.61)	.250 (6.35)
228M210	10	05	.562	-24 UNEF	.812 (20.63)	1.000 (25.40)	.932 (23.67)	.519 (13.18)	.312 (7.92)
228M212	12	06	.688	-24 UNEF	.938 (23.83)	1.062 (26.98)	.995 (25.27)	.582 (14.78)	.375 (9.53)
228M214	14	08	.812	-20 UNEF	1.062 (26.98)	1.125 (28.58)	1.120 (28.45)	.707 (17.963)	.500 (12.70)
228M216	16	10	.932	-20 UNEF	1.188 (30.18)	1.188 (30.18)	1.245 (31.62)	.832 (21.13)	.525 (13.68)
228M218	18	12	1.062	-18 UNEF	1.312 (33.33)	1.250 (31.75)	1.370 (34.80)	.957 (24.31)	.750 (19.05)
228M220	20	12	1.188	-18 UNEF	1.438 (36.53)	1.312 (33.33)	1.370 (34.80)	.957 (24.31)	.750 (19.05)
228M222	22	16	1.312	-18 UNEF	1.562 (39.68)	1.375 (34.93)	1.620 (41.15)	1.207 (30.66)	1.000 (25.40)
228M224	24	16	1.438	-18 UNEF	1.688 (42.88)	1.438 (36.53)	1.620 (41.15)	1.207 (30.66)	1.000 (25.40)

NOTES :

- ALL DIMENSIONS ARE IN INCHES (MILLIMETERS).
- CONSULT FACTORY FOR OPTIONAL ENTRIES AND SHIELD LENGTHS.
- USAGE LENGTH TO BE DETERMINED AND TRIMMED BY USER.
- SHELL SIZE FOR THORN ELECTRICAL COMPONENTS, LTD. PT 55 SE CONNECTORS.

ORDERING INFORMATION



SPECIFICATION CONTROL DRAWING

DRAWN CHECKED APPROVED APPROVED APPROVED	6 Rev 3/12/94 3/11/94 7-27-94 4/25/94	1 12 06 1/12/94 3/11/94	EYECO THE SHIELDING CORPORATION 1500 CLEVELAND DRIVE IRVINE, CA 92614 U.S.A.	Raytheon
TITLE SHIELDED ADAPTER, 90°			SIZE D 06090	
UNLESS OTHERWISE SPECIFIED DIMENSIONS ARE IN INCHES FINISHES ARE: XXX A --- XXX B --- XXX C ---			DWG. NO. 228M2XX	
DO NOT SCALE THIS DRAWING			SHEET 1 OF 1	

If this document is printed it becomes uncontrolled.
Check for the latest revision.