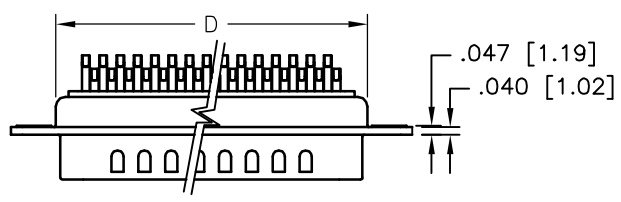
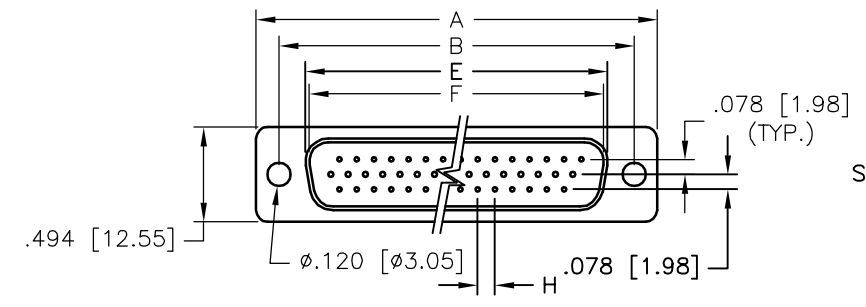


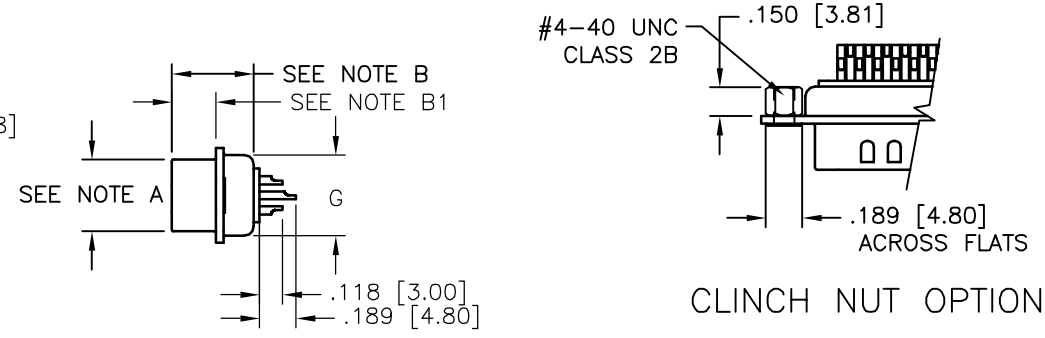
REVISIONS				
ZONE	REV	DESCRIPTION	DATE	APPROVED
	A	ECN 0382	19-JUN-03	



NOTE A: 15, 26, 44 & 62 MALE: 0.327 [8.30]  
 15, 26, 44 & 62 FEMALE: 0.311 [7.90]  
 NOTE B: 15, 26, 44 & 62 MALE: 0.431 [10.95]  
 15, 26, 44 & 62 FEMALE: 0.423 [10.75]  
 NOTE B1: 15, 26, 44 & 62 MALE: 0.240 [6.10]  
 15, 26, 44 & 62 FEMALE: 0.232 [5.90]

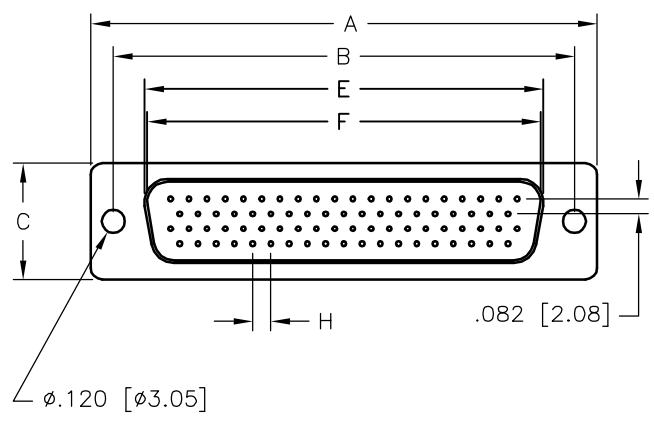
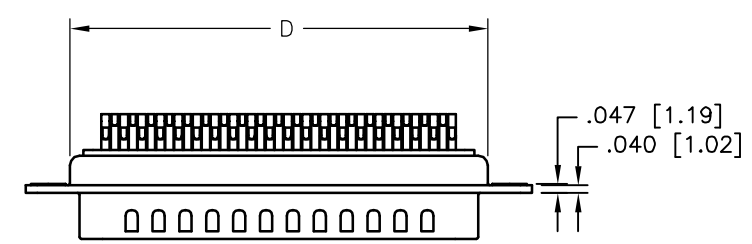
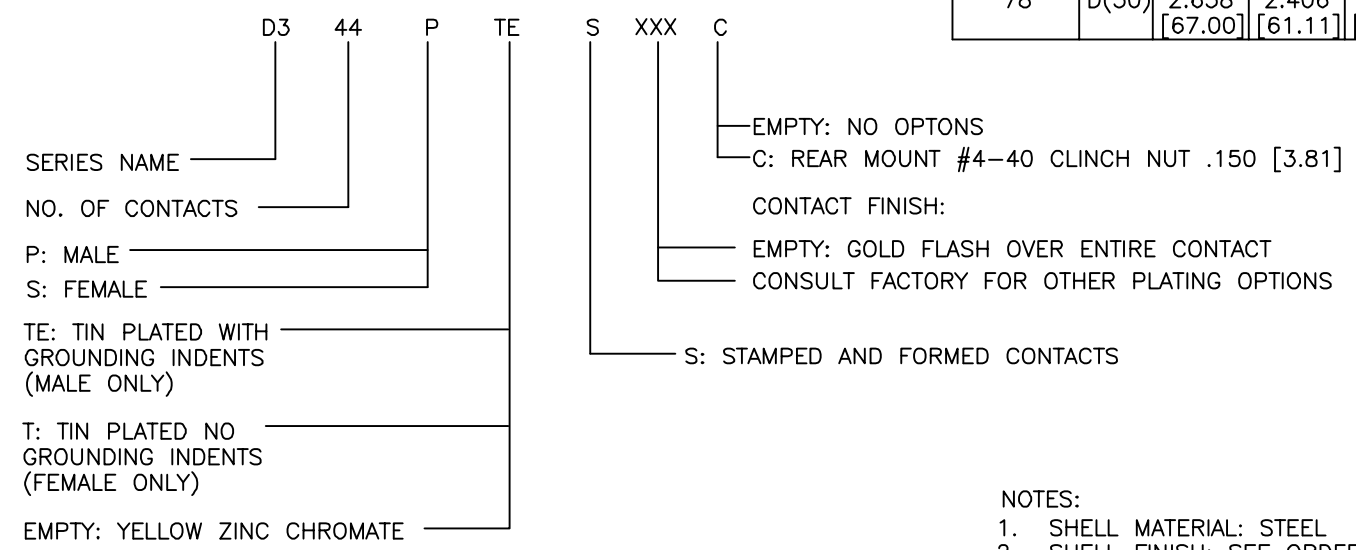


15 THROUGH 62 POSITION

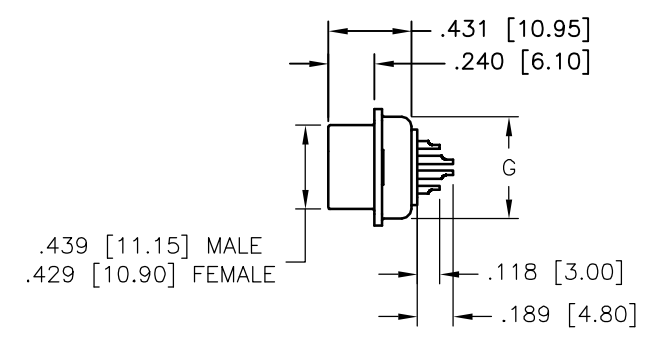


No. of Contacts	Shell Size	DIMENSIONS INCHES [MM]							
		A	B	C	D	E Max. Female	F Min. Male	G	H
15	E(9)	1.213 [30.81]	0.984 [24.99]	0.494 [12.55]	0.759 [19.28]	0.643 [16.33]	0.666 [16.92]	0.422 [10.72]	0.090 [2.29]
26	A(15)	1.541 [39.14]	1.310 [33.27]	0.494 [12.55]	1.089 [27.65]	0.971 [24.66]	0.994 [25.25]	0.422 [10.72]	0.090 [2.29]
44	B(25)	2.088 [53.04]	1.850 [46.99]	0.494 [12.55]	1.626 [41.30]	1.511 [38.38]	1.534 [38.96]	0.422 [10.72]	0.090 [2.29]
62	C(37)	2.730 [69.34]	2.500 [63.50]	0.494 [12.55]	2.261 [57.44]	2.159 [54.84]	2.182 [55.42]	0.422 [10.72]	0.095 [2.41]
78	D(50)	2.638 [67.00]	2.406 [61.11]	0.602 [15.30]	2.178 [55.32]	2.064 [52.43]	2.079 [52.81]	0.527 [13.40]	0.095 [2.41]

ORDER INFORMATION



78 POSITION



- NOTES:
- SHELL MATERIAL: STEEL
  - SHELL FINISH: SEE ORDER INFORMATION
  - INSULATOR MATERIAL: GLASS FILLED PBT UL94V-0
  - INSULATOR COLOR: BLACK
  - CONTACT MATERIAL: BRASS
  - CONTACT FINISH: SEE ORDER INFORMATION
  - TEMPERATURE RANGE: -55° TO +105° CENTIGRADE
  - VOLTAGE RATING: 300 VDC
  - CURRENT RATING: 3 AMPS
  - INSULATION RESISTANCE: >3000 MEGOHMS
  - CONTACT RESISTANCE: <15 MILLIOHMS
  - DIELECTRIC WITHSTANDING VOLTAGE: 1000 VAC MINIMUM (1 MINUTE)

UNLESS OTHERWISE SPECIFIED		<b>Northern Technologies</b> <small>THIS DRAWING IS THE PROPERTY OF NORTHERN TECHNOLOGIES AND SHOULD NOT BE REPRODUCED WITHOUT NORTHERN TECHNOLOGIES WRITTEN PERMISSION.</small>		
1. ALL DIMENSIONS ARE IN INCHES (MM) 2. DIMENSIONS ARE TYPICAL		PART NUMBER SEE ORDER INFORMATION		
DRAWN LuisC.		DESCRIPTION D3 SERIES CONNECTORS		
CHECKED JSD	28-FEB-02	SIZE B	CODE 100_156	DWG NO. 0002-100-156
ISSUED	05-MAR-02	SCALE 1:1	SHEET 1 OF 1	