

**MICRO SWITCH**

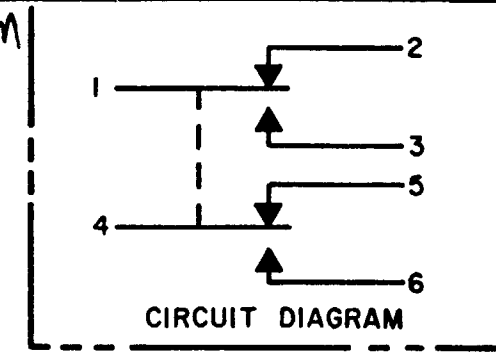
FREERPORT ILLINOIS U.S.A.  
A DIVISION OF HONEYWELL

FED. MFG. CODE 91929

**SWITCH-ENCLOSED**

CATALOG LISTING

**622EN18-6**



STAINLESS STEEL SCREW WITH  
.032 WIDE X .040 DEEP SLOT

ROLLER MAY BE LOCKED IN  
INCREMENTS OF 45° AZIMUTH  $\triangle 6$

4-40 UNC-3B MINIATURE  
LOCK NUT-STAINLESS STEEL

(6) NO. 20 WIRE LEAD PER MIL-W-22759/7  
MARKED WITH CIRCUIT IDENTIFICATION AND  
WIRE GAGE (1-20, 2-20, ETC) PER MIL-W-5088  $\triangle 8$

.072±.004 WIDE X .031±.003  
DEEP KEYWAY TO WITHIN  
.250 OF SHOULDER

CORROSION RESISTANT  
STEEL PLUNGER AND  
BUSHING

1.485±.030  
FREE  
POSITION

1.000±.030

.047 DIA HOLE FOR  
WIRE LOCKING (3)

1.000 MAX

.688±.030 DIA

.392

.375 DIA X .104 WIDE CORROSION  
RESISTANT STEEL ROLLER

15/32-32 UNS THREAD TO WITHIN .093 OF SHOULDER

CORROSION RESISTANT STEEL HEX NUT,  
.62 ACROSS FLATS X .125 THICK (2) (MS 21340-04)  $\triangle 7$

CORROSION RESISTANT STEEL INTERNAL TOOTH  
LOCKWASHER, .60 DIA X .018 REF THICK (MS 35333-136)  $\triangle 7$

CORROSION RESISTANT STEEL KEYING WASHER,  
.72 DIA X .040 THICK, TAB .110 WIDE (MS 25081C4)  $\triangle 7$

.05

.500 MAX

72.000 MIN

**NOTES**

- 1 - CORROSION RESISTANT STEEL ENCLOSURE
- 2 - SWITCH SEALED PER MIL-PRF-8805 SYMBOL 4
- 3 - COINCIDENCE OF OPERATING AND RELEASING POINTS: .010 OF PLUNGER TRAVEL
- 4 - CIRCUIT DIAGRAM AND CAT. LIST. ARE SHOWN ON NAMEPLATE
- 5 - ELECTRICAL RATINGS APPLY AS SPECIFIED IN MIL-PRF-8805/43 UP TO 185°F
- $\triangle 6$  - TO ADJUST ROLLER DIRECTION REMOVE LOCK NUT, SCREW AND ROLLER. DEPRESS PLUNGER UNTIL IT CAN BE ROTATED TO DESIRED POSITION. RETURN PLUNGER TO FREE POSITION AND REASSEMBLE ROLLER
- $\triangle 7$  - HARDWARE MAY BE PACKAGED UNASSEMBLED PER MIL-PRF-8805
- $\triangle 8$  - ELECTRICAL WIRES ON CENTERLINE WITH KEYWAY WITHIN ±6°

THIS DRAWING COVERS A PROPRIETARY ITEM AND IS THE PROPERTY OF MICRO SWITCH, A DIVISION OF HONEYWELL. THIS DRAWING IS NOT TO BE COPIED OR USED WITHOUT THE APPROVAL OF MICRO SWITCH.

SCALE FULL	
DO NOT SCALE PRINT	
TOLERANCES APPLY TO DESIGN UNITS CONVERSIONS ARE ONLY FOR REFERENCE UNLESS NOTED TOLERANCES ARE $\pm$	
NO PLACES	DIM. TOL. DIM. TOL.
ONE PLACE	mm in mm/in
TWO PLACES	X 1/64 X 1/64
THREE PLACES	X .001 X .001
ANGLES	X .01 X .01
DESIGN UNITS <input type="checkbox"/> METRIC <input checked="" type="checkbox"/> US CUSTOMARY	
THIRD ANGLE PROJECTION	
WEIGHT 8.0 OZ MAX	

CHARACTERISTICS	ELECTRICAL DATA	
OPERATING FORCE ----- 6-12 LB	CONTACT ARRANGEMENT	
FULL OVERTRAVEL FORCE ----- 30 LB MAX	SPDT (2)	
RELEASE FORCE ----- 4 LB MIN	28 VDC	
PRETRAVEL ----- .040 MAX	LOAD	SEA LEVEL 50,000 FT.
DIFFERENTIAL TRAVEL ----- .020 MAX	RES	7 7
OVERTRAVEL ----- .125 MIN	IND	4 2.5
	MOTOR	4
	LAMP	

622EN18-6  
 1  
 DRAWING NUMBER  
 20  
 ISSUE  
 CMH  
 09 APR 09  
 CHECK  
 REVISIONS  
 A C046610  
 DJW OCT 79  
 B C047573  
 PART 4  
 R J H  
 18 AUG 80  
 C C049806  
 S A P  
 25 SEPT 81  
 D C057370  
 T S K  
 14 MAY 85  
 CO  
 E 75612 B  
 WES  
 16 AUG 93  
 F 0028420  
 BS  
 28 FEB 07  
 G 0051009  
 S J K  
 09 APR 09  
 D J W  
 19 OCT 79  
 DRAWN  
 FO-82851-B