

# MICRO SWITCH

FREERPORT ILLINOIS, U.S.A  
A DIVISION OF HONEYWELL  
FED. MFG. CODE 91929

# SWITCH-BASIC

CATALOG LISTING

# 5XE1-T

5XE1-T

M

DRAWING  
NUMBER

2

ISSUE

REPLACES

RELEASE NO. PR-4242

CHECK

CHECK

CHECK

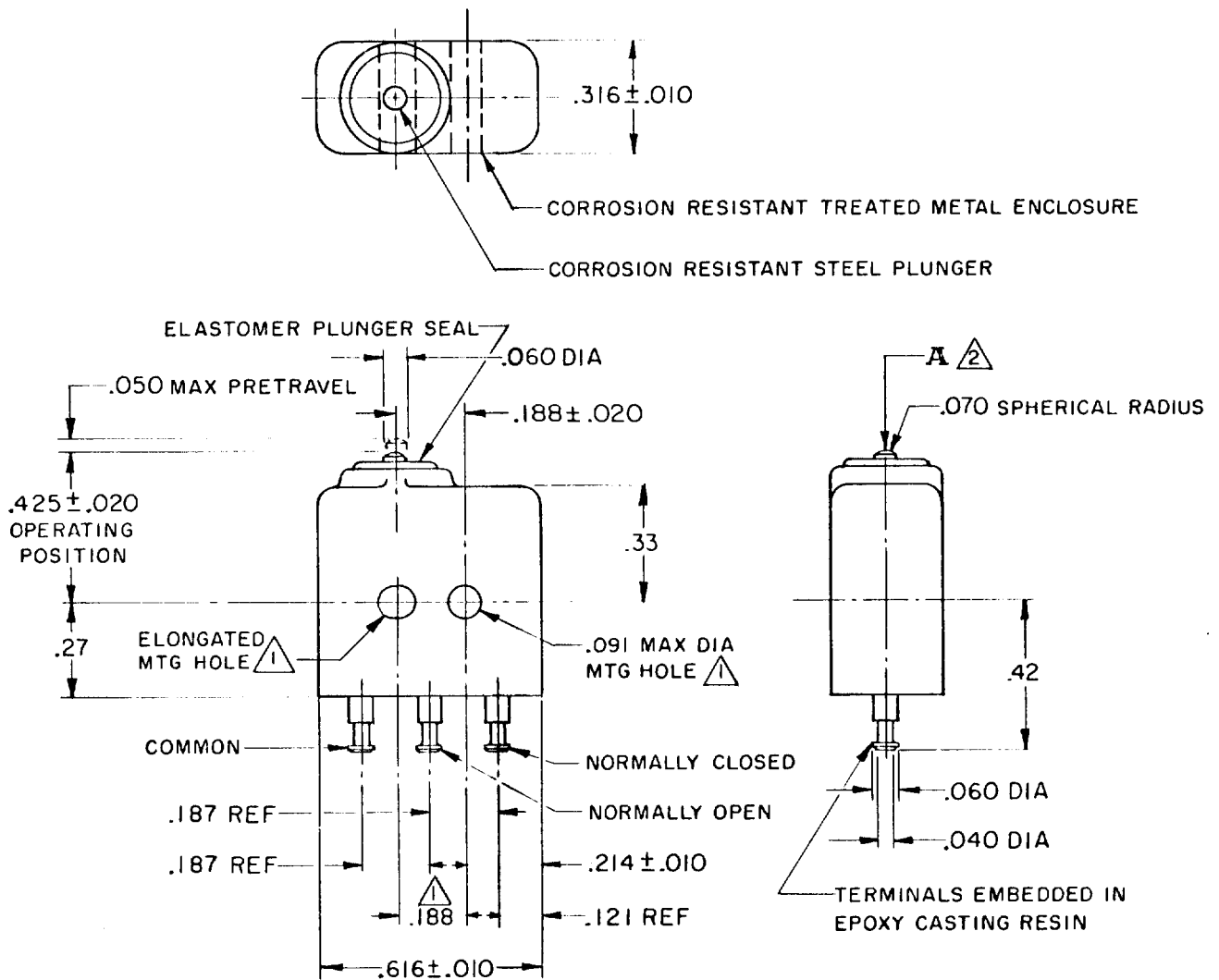
CHECK

CHECK

CHECK

CHECK

CHECK

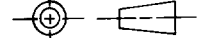


NOTE -

- ▲ MOUNTING HOLES WILL ACCEPT  $.087$  MAX DIA PINS OR SCREWS ON  $.188 \pm .002$  CENTERS
- ▲ ACTUATION IN LINE WITH ARROW "A" IS RECOMMENDED

THIS DRAWING COVERS A PROPRIETARY ITEM AND IS THE PROPERTY OF MICRO SWITCH, A DIVISION OF HONEYWELL. THIS DRAWING IS NOT TO BE COPIED OR USED WITHOUT THE APPROVAL OF MICRO SWITCH.

THIRD ANGLE PROJECTION



### CHARACTERISTICS

OPERATING FORCE ----- 5 - 17 OZ

RELEASE FORCE ----- 4 OZ MIN

RELEASE TRAVEL ----- .004 MIN

DIFFERENTIAL TRAVEL ----- .005 MAX

OVERTRAVEL ----- .004 MIN

### ELECTRICAL DATA

CONTACT ARRANGEMENT  
SPDT

### 28 VOLTS DC RATING

INDUCTIVE ----- SEA LEVEL -- 4 AMP  
50,000 FT -- 2.5 AMP

RESISTIVE ----- SEA LEVEL -- 7 AMP  
50,000 FT -- 7 AMP

MAXIMUM INRUSH ----- 24 AMP

SCALE 2 TO 1

DO NOT SCALE PRINT

### TOLERANCES

APPLY TO DESIGN UNITS. CONVERSIONS ARE ONLY FOR REFERENCE. UNLESS NOTED, TOLERANCES ARE ±

DIM.	TOL.	DIM.	TOL.
mm	mm/in	in	mm/in
NO PLACES	X	1/.04	X
ONE PLACE	X,X	0.4/.016	X,X
TWO PLACES	X,XX	0.15/.006	X,XX
THREE PLACES	X,XXX	0.38/.015	X,XXX
ANGLES		0.13/.005	

SI METRIC  US CUSTOMARY

DESIGN UNITS

WEIGHT .16 OZ MAX

FO-52848-A

DRAWN

BEN 9AUG 74