

# F9200

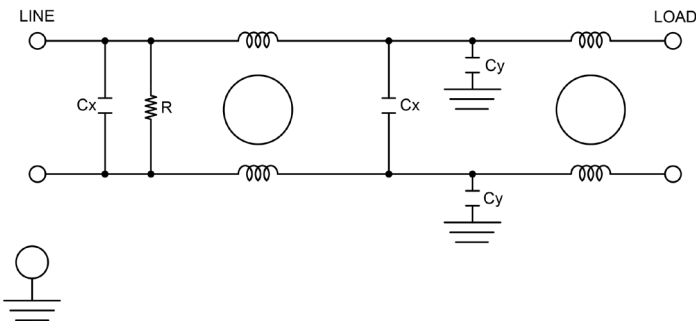
## EXTENDED TEMPERATURE **RUGGED COTS** DUAL STAGE SINGLE PHASE FILTERS

### FEATURES

- » Rated currents include **5A, 10A, 20A, 30A and 35A**
- » Extended temperature range 80°C
- » Dual Stage Line Filter
- » High Performance
- » Available with **S** (studs) option
- » Designed for dynamic and high ambient environment
- » Agency Approved to UL1283 / 60929, CSA C22.2, EN 60098-1



### ELECTRICAL SCHEMATIC



### SPECIFICATIONS

OPERATING FREQUENCY	50/60Hz
MAX. OPERATING VOLTAGE	250V +10%
OPERATING TEMPERATURE	-40 TO 100°C
CLIMATIC CATEGORY	25/100/21
TERMINALS (-T)	STUDS (M4 5-20A) (M6 30-35A)
TYP. WEIGHT, LBS (KG)	0.8 (0.4)

### LEAKAGE CURRENT

@ 250 VAC 50 Hz	0 - 0.89 mA Max.
@ 115 VAC 60 Hz	0 - 0.49 mA Max.

### HIPOT RATINGS

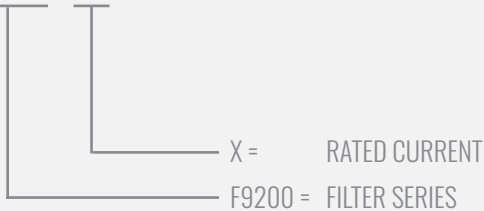
LINE TO LINE	1450 VDC
LINE TO GROUND	2250 VDC

### TYPICAL APPLICATIONS

- ✓ Applications at high ambient environments or with limited temperature rise requirements such as RTCA/DO-160, MIL-STD-461 and other military/rugged industrial applications.

### HOW TO ORDER

F9200.00511.00



**NOTE:** USE ANY COMBINATION OF -X (AMPS) WITH ANY -Y RATINGS

E.G. **F9200.00511.00** (5AMPS)

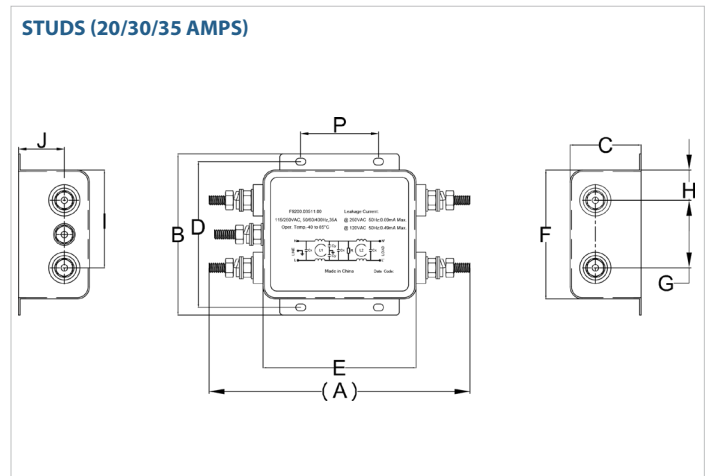
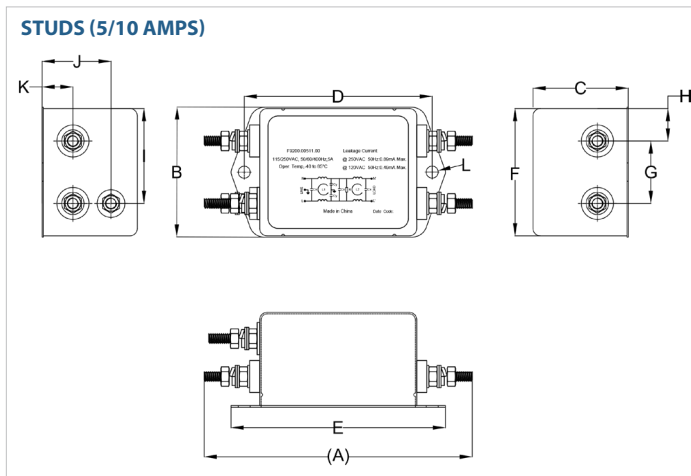
For **X** options see product specification table.

# F9200

## EXTENDED TEMPERATURE **RUGGED COTS** DUAL STAGE SINGLE PHASE FILTERS

MODEL NO.	RATED CURRENT, A @ 80° C	LEAKAGE CURRENT, mA @ 250V AC, 50 Hz / @ 115V AC, 60 Hz		TERMINAL OPTIONS			MAX. DIMENSIONS" (MM)		
				(QD)INPUT/ OUTPUT	(W) INPUT/ OUTPUT	(S) INPUT/ OUTPUT	WIDTH	(LENGTH)	HEIGHT
F9200.00511.00	5	0.89	0.49			✓	2.05"(52)	4.21"(107)	1.50"(38)
F9200.01011.00	10	0.89	0.49			✓	2.28"(58)	5.38"(137)	1.61"(41)
F9200.02011.00	20	0.89	0.49			✓	2.28"(58)	5.38"(137)	1.61"(41)
F9200.03011.00	30	0.89	0.49			✓	4.13"(105)	6.71"(170)	1.82"(46)
F9200.03511.00	35	0.89	0.49			✓	4.13"(105)	6.71"(170)	1.82"(46)

### RP210 MECHANICAL OUTLINES (MM)



SERIES	(A)	B	C	D	E	F	G	H	I	J	K	L
<b>STUDS (5A)</b>	4.21" (107)	2.05" (52)	1.50" (38)	2.95" (75)	3.37" (86)	2.01" (51)	0.98" (25)	0.51" (13)	1.50" (38)	1.09" (28)	0.48" (12)	2*Ø4.8
<b>STUDS (10A)</b>	5.38" (137)	2.28" (58)	1.61" (41)	4.13" (105)	4.53" (115)	2.24" (57)	1.18" (30)	0.53" (13)	1.71" (43)	1.15" (29)	0.51" (13)	N/A
<b>STUDS (20/30/35A)</b>	6.71" (170)	4.13" (105)	1.82" (46)	3.74" (95)	3.94" (100)	3.31" (84)	1.73" (44)	0.78" (20)	2.51" (64)	0.79" (20)	N/A	N/A

TYPICAL TOLERANCE: +/-0.02" (0.50MM)

**\*CONTACT FACTORY FOR TYPICAL INSERTION LOSS, dB (50/50 Ohm)**