

Terminal Block Accessories

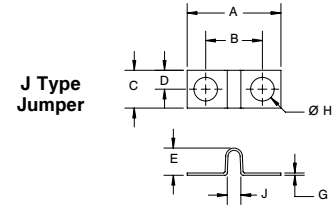
J & JS Jumpers

Catalog #	A	B	C	D	E	F	G	H	J	K
J 410/J 411	0.41	0.25	0.19	0.09	0.10	0.04	0.010	0.094	0.08	NA
J 600	0.62	0.38	0.25	0.12	0.16	0.04	0.015	0.156	0.08	NA
J 601	0.71	0.45	0.31	0.15	0.19	0.06	0.015	0.166	0.11	NA
J 602	0.91	0.56	0.37	0.18	0.27	0.08	0.015	0.190	0.16	NA
J 603	1.13	0.69	0.43	0.21	0.25	0.12	0.031	0.201	0.24	NA
J 604	1.38	0.88	0.50	0.25	0.35	0.15	0.035	0.234	0.32	NA
J 605	1.75	1.13	0.62	0.31	0.39	0.24	0.035	0.266	0.54	NA
J 621	0.69	0.44	0.30	0.17	0.38	0.07	0.015	0.141	0.11	0.14
JS 600	0.62	0.38	0.25	0.12	0.16	0.04	0.015	0.156	0.08	0.16
JS 601	0.71	0.45	0.31	0.15	0.19	0.06	0.015	0.166	0.11	0.17
JS 602	0.91	0.56	0.37	0.18	0.27	0.08	0.015	0.190	0.16	0.14

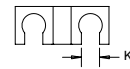
MSP Catalog Designations:
 J 600 = LL 100
 J 601 = LL 200
 J 602 = LL 300
 J 603 = LL 400

Material: Brass
 Finish: Nickel Plate

mm = dim X 25.4



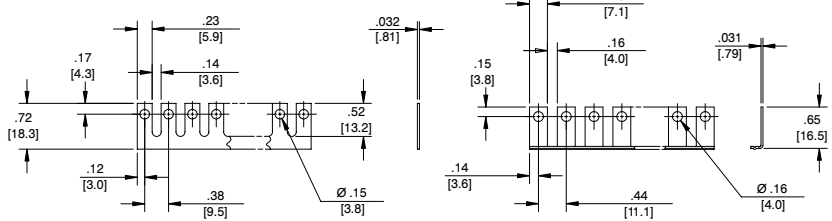
JS Type Jumper
 (per 55164/28B)



NOTE 1: These parts are not necessarily supplied flat. The functioning of the part, however, will not be interfered.

NOTE 2: All dimensions are applicable after the bus (jumper) is torqued down into the associate terminal board.

RJ Type Jumpers



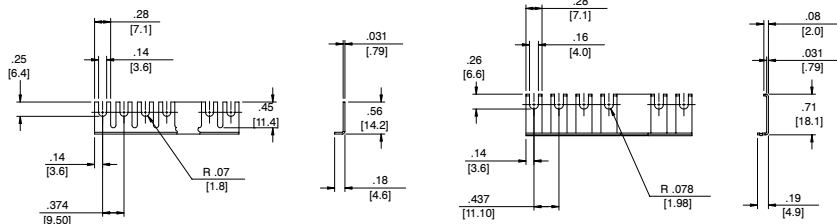
Material: Brass
 Finish: Nickel Plate

600 RJ
 Max # of sections = 24

601 RJ
 Max # of sections = 24

Note: 670A RZ, 599 Series, use 600 RJ

RJS Type Jumpers



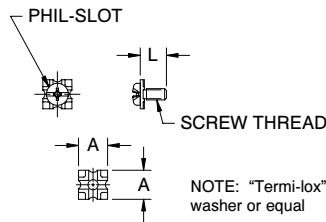
Material: Brass
 Finish: Nickel Plate

600 RJS
 Max # of sections = 24

601 RJS
 Max # of sections = 24

Note: 670A RZ, 599 Series, use 600 RJ

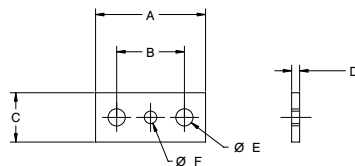
Wire Clamp



Catalog #	Material	Finish	Screw Thread	L	A
3786	Steel	Nickel	8-32 UNC	0.38	0.41
3765			6-32 UNC	0.31	0.33
3780	Brass	Nickel	8-32 UNC	0.38	0.41
3760			6-32 UNC	0.31	0.33
3860	Brass	Nickel	6-32 UNC	0.30	0.29
3865	Steel	Nickel	6-32 UNC	0.30	0.29

mm = dim X 25.4

Straddle Plate



Catalog #	A	B	C	D	E	F	Material	Finish
SPB 600	0.56	0.31	0.30	0.032	0.144	N/A	Brass	Tin
SPB 601	0.71	0.42	0.30	0.031	0.148	N/A	Brass	Nickel
SPB 602	0.87	0.50	0.40	0.032	0.189	N/A	Brass	Nickel
SPB 603	1.03	0.62	0.45	0.063	0.190	0.143	Brass	Tin
SPB 604	1.21	0.75	0.54	0.087	0.187	0.138	Brass	Tin
SPB 605	1.46	0.87	0.63	0.116	0.220	0.138	Brass	Nickel

mm = dim X 25.4