


[Home](#) > [Search Tools](#) > [Part Number](#)

Part Number Search

 You Searched For:

Note: Data provided here are offered in good faith and are as reliable and accurate as possible. However, they do not form part of any contract of supply or purchase unless specifically confirmed in writing by an authorized representative of ITT. All information and images shown are the property of ITT ICS and are not to be reproduced in any form without direct authorization from ITT ICS.


ITT ICS strongly recommends that you contact your local ITT Sales Office for confirmation of all the details you obtain through these Web pages. Please be aware that data may change at any time and without notice. For a listing of Sales Offices, local sales support, and authorized distributors please use the "Global Sales Locator" located either to the right of this data or at the top of every page.

[Sales Support](#)
[Product Overview](#)
[Stock Check](#)
[Product Home](#)

Our Descriptive Part Number: DE11533920

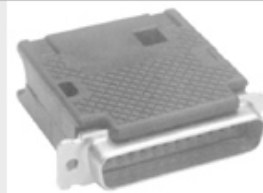
Our Global Manufacturing Part Number: 115339-0020

Brand: Cannon Product Category: D Sub Product Line: D Sub Series: D SUB

	YES	RoHS compliant =	material restrictions of lead, cadmium, hexavalent chromium, mercury, poly bromated biphenyl ether (PBB) and poly bromide diphenyl ether (PBDE) according to directive 2002/95/EC
	NO	RoHS compatible =	Compatible with lead free soldering process

Product Datasheet

Thumbnail Image



Product Group	D Subminiature Accessories
Where Sold	Europe, Americas, Asia Pacific
D Sub Accessory type	Plastic Endbell
Application Type	Commercial
Shell Size	DE
D Sub Accessory Style	Snap-Together Universal
Endbell Material	Thermoplastic, UL 94V-0 Rated. Color: Black.
Cable Entry	Ø7,01 (.276)
Dimension B	Ø7,01 (.276) max.
Dimension C	17,00 (.669) ±0,20 (.008)
Dimension D	19,51 (.768) ±0,20 (.008)
Note	Customer furnishes tie wrap.
Footnote	Dimension are shown in mm (inch). Dimensions subject to change.
For more information	Please Contact Cannon Sales Department.