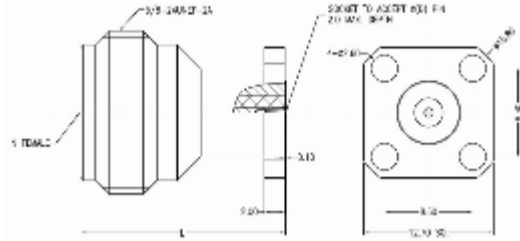


RFSMACJAAC Datasheet

Product Name // SMA Jack Edge Launch RF Connector, PCB Thickness

[View Product Page](#)

* Representative product image only



// Product Description:

- ⊗ SMA Jack Edge Launch RF Connector, PCB Thickness
- ⊗ Maximum Voltage: 335V
- ⊗ Temperature range: -55Å°C to +155Å°C
- ⊗ Frequency range: 0GHz - 26.5GHz
- ⊗ VSWR:
- ⊗ Dielectric withstanding Voltage: >750V
- ⊗ Impedance: 50Ohm
- ⊗ Body Material: Brass Copper with gold 10u" plating
- ⊗ Contact Material: Beryllium Copper

// General Information:

Product Display Title:	SMA Series Edge Launch Connector
Product Family:	Radio Frequency Connectors
Product Series:	SMA Series
Weight:	1
Body Length:	11.70mm
Body Material:	Brass Copper with gold 10u" plating
Centre Contact Retention Force:	>20N
Contact Pin Material:	Beryllium Copper
Min Coupling Torque:	0.80Nm
Max Coupling Torque:	1.10Nm
Dielectric Withstanding Voltage:	>750V
Durability:	>500 cycles
Function:	Female Edge Launch RF Connector
Impedance:	50Ohm
Insulation Resistance:	>5000MOhm
Insulator:	ULTEM 1000
Max Operating Temperature:	+155°C
Min Operating Temperature:	-55°C
Min Operating Frequency:	0GHz
Max Operating Frequency:	26.5GHz
Pcb Thickness:	1.78mm
Pin Diameter:	0.30mm
Pin Length:	0.60mm
Thread Size:	1/4 36UNS 2A
Voltage Max:	335V
Vswr:	<1.30

// Product PDF Links

[SMA Series Product Datasheet](#)

// Product 3D CAD Model Links

[RFSMACJAAC3D CAD Model](#)