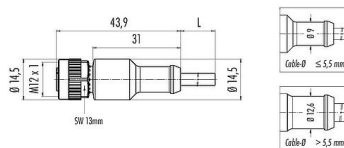


Product description	<b>M12 Female cable connector, Contacts: 5, unshielded, moulded on the cable, IP69K, UL 2238, PVC, grey, 5 x 0.34 mm<sup>2</sup>, 2 m</b>
Area	<b>series 763</b>
Part no.	<b>77 3430 0000 20005-0200</b>

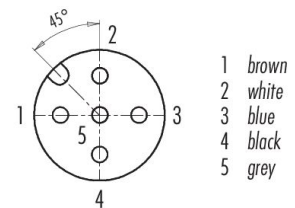
### Illustration



### Scale drawing



### Contact arrangement (Plug-in side)



## Technical data

### General features

Part no.	<b>77 3430 0000 20005-0200</b>
Notice	Alternative part no.: 79 3440 12 05 Please note that, due to the change from the old to the new order number, there may be deviations in the technical specifications. For questions about product details, please use the 'Contact Customer Service' form on the right.
Connector design	Female cable connector
Type standard	DIN EN 61076-2-101
Cable length	2 m (Standard 2 m and 5 m. Other lengths are available on request.)
Version	Connector socket straight
Connector locking system	screw
Termination	moulded on the cable
Degree of protection	IP69K
Connection cross-section	0.34 mm <sup>2</sup> / AWG 22
Temperature range from/to	-25 °C / 90 °C
Mechanical operation	> 100 Mating cycles
Weight (g)	180.06
Customs tariff number	85444290
Country of Origin	DE

### Electrical parameters

Rated voltage	60 V
Rated impulse voltage	1500 V
Rated current	4.0 A
Insulation resistance	≥ 10 <sup>10</sup> Ω
Pollution degree	3
Overvoltage category	II

Product description	<b>M12 Female cable connector, Contacts: 5, unshielded, moulded on the cable, IP69K, UL 2238, PVC, grey, 5 x 0.34 mm<sup>2</sup>, 2 m</b>
Area	<b>series 763</b>
Part no.	<b>77 3430 0000 20005-0200</b>

Insulating material group	II
EMC compliance	unshielded

### Material

Housing material	PUR
Contact body material	PUR
Contact material	CuSn (bronze)
Contact plating	Au (gold)
Locking material	Zinc die-cast nickel-plated
REACH SVHC	None (No pollutants)
SCIP number	SCIP-number not available

### Authorization/approvals

Approvals	UL 2238
-----------	---------

### Classifications

eCl@ss 11.1	27-06-03-11
ETIM 9.0	EC002638

### Declarations of conformity

Low Voltage Directive	2014/35/EU (EN 60529:1991;EN 60204-1:2018)
RoHS Directive	2011/65/EU (EN 50581:2012)

### Cable data - Structure of the cable

Cable diameter	5.2 mm
Cross section	5 x 0.34 mm <sup>2</sup>
Sheath material	PVC
Single-lead insulation	PVC
Single-lead structure	42 x 0.10 mm
Cable color	grey

### Cable data - Mechanical properties

Bending radius, fixed cable	≥ 5 x Ø
Bending radius, moving cable	≥ 10 x Ø
Bending cycles	> 2 million
Permitted acceleration	5 m/s <sup>2</sup> + 1 m/s <sup>2</sup>
Travel distance, horizontal	5 m/s <sup>2</sup> -> 5 m
Travel distance, vertical	5 m/s <sup>2</sup> -> 2 m
Travel speed	≤ 200 m/min (5 m horizontal distance)

Product description	<b>M12 Female cable connector, Contacts: 5, unshielded, moulded on the cable, IP69K, UL 2238, PVC, grey, 5 x 0.34 mm<sup>2</sup>, 2 m</b>
Area	<b>series 763</b>
Part no.	<b>77 3430 0000 20005-0200</b>

#### Cable data - Thermal properties

Temperature range cable in move from/to	-5 °C / 105 °C
Temperature range cable fixed from/to	-40 °C / 105 °C

#### Cable data - Other features

Halogen free	no
--------------	----

Product description	<b>M12 Female cable connector, Contacts: 5, unshielded, moulded on the cable, IP69K, UL 2238, PVC, grey, 5 x 0.34 mm<sup>2</sup>, 2 m</b>
Area	<b>series 763</b>
Part no.	<b>77 3430 0000 20005-0200</b>

## Security notices

The connector must not be plugged or unplugged under load. Non-observance and improper use can result in personal injury.

The connectors have been developed for applications in plant engineering, control and electrical equipment construction. The user is responsible for checking whether the connectors can also be used in other areas of application.

To protect against unintentional opening of the connector, the thread between the housing and the connector head must be secured with a suitable cyanoacrylate adhesive when used in circuits with voltages dangerous to the touch. This does not apply to connectors used in SELV and PELV circuits according to IEC 61140 (EN 61140, VDE 0140-1).

Connectors which are used in circuits with voltages dangerous to the touch may only be installed and used by, or under the supervision of, persons with electrical engineering training, taking into account the applicable regulations and standards.

The user must take suitable safety precautions to ensure that the connector cannot be accidentally disconnected.

Plug connectors with enclosure protection IP67 and IP68 are not suitable for use under water. When used outdoors, the plug connectors must be protected separately against corrosion. For further information on the IP protection classes, please refer to the "Technical Information" download centre.

Please observe the pollution degree and the overvoltage category. For further information, please refer to the download center "Technical Information".

To lock the cable connector with the device connector, the threaded ring is tightened "hand-tight" (approx. 60 cNm).

The protection class specification applies on condition that the four mounting holes are made as blind holes.

## DECLARATION FROM THE MANUFACTURER

For part no.: 77 3430 0000 20005-0200

09/07/2025

With regard to the

**Regulation (EC) No 1907/2006 of the European Parliament and of the Council of 18 December 2006 concerning the Registration, Evaluation, Authorisation and Restriction of Chemicals (REACH), establishing a European Chemicals Agency, amending Directive 1999/45/EC and repealing Council Regulation (EEC) No 793/93 and Commission Regulation (EC) No 1488/94 as well as Council Directive 76/769/EEC and Commission Directives 91/155/EEC, 93/67/EEC, 93/105/EC and 2000/21/EC.**

With the REACH regulation, the EU has created a uniform system for the Registration, Evaluation, Authorisation and restriction of CHEMicals – or REACH. The purpose of this regulation is to ensure a high level of protection of human health and the environment.

Franz Binder GmbH & Co. Elektrische Bauelemente KG hereby confirms that it acts as a downstream user (producer of products) according to the aforementioned regulation.

We obtain all raw materials and/or preparations, from which the connectors are made, from suppliers who have already registered or pre-registered all substances, including those present in the preparations. The products supplied by the company are not subject to registration.

With regard to Article 33(1) of the REACH regulation, Franz Binder GmbH & Co. Elektrische Bauelemente KG complies with its information obligations:

An up-to-date candidate list (candidate list of substances of very high concern for authorisation, as of 25/06/2025 see: <https://echa.europa.eu/de/candidate-list-table>) in accordance with Article 59 (1, 10) of the regulation (EC) No 1907/2006 (REACH) has been published.

The aforementioned article includes the following substances from the up-to-date candidate list in concentrations of more than 0,1 percent by mass:

- None (No pollutants)

Please refer any questions to our Product Compliance Team:

[Product-Compliance@binder-connector.de](mailto:Product-Compliance@binder-connector.de)

## DECLARATION FROM THE MANUFACTURER

For part no.: 77 3430 0000 20005-0200

09/07/2025

With regard to the

**COMMISSION DELEGATED DIRECTIVE (EU) 2015/863  
of 31 March 2015**

**amending Annex II to Directive 2011/65/EU of the European Parliament and of the Council as regards  
the list of restricted substances**

Directive 2011/65/EU stipulates provisions on the restriction of the use of hazardous substances in electrical and electronic equipment (EEE) with a view to contributing to the protection of human health and the environment, including the environmentally sound recovery and disposal of EEE waste.

### ANNEX II

Restricted substances referred to in Article 4(1) and maximum concentration values tolerated by weight in homogeneous materials

Lead (0,1%) mercury (0,1%) cadmium (0,01%) hexavalent chromium (0,1%) polybrominated biphenyls (PBB) (0,1%) polybrominated diphenyl ethers (PBDE) (0,1%) bis(2-ethylhexyl) phthalate (DEHP) (0,1%) butyl benzyl phthalate (BBP) (0,1%) dibutyl phthalate (DBP) (0,1%) diisobutyl phthalate (DIBP) (0,1%)

Franz Binder GmbH & Co. Elektrische Bauelemente KG hereby confirms that it complies with all standard articles of the aforementioned Directive. Our products do not contain any of the specified prohibited substances above the maximum permitted concentrations specified therein, taking into account the exemptions in Annex III of Directive 2011/65/EU.

- Complies with RoHS III without exemption

Please refer any questions to our Product Compliance Team:

[Product-Compliance@binder-connector.de](mailto:Product-Compliance@binder-connector.de)

## MANUFACTURER'S DECLARATION

For part no.: 77 3430 0000 20005-0200

09/07/2025

with regard to

### Declaration of compliance with China RoHS – Components

We herewith declare the compliance of this product with the Chinese marking requirements. This product can be recycled and used safely during its environmentally friendly use period of 50 years. These articles will be sold as components only for manufacturing. According to the Electronic Industry Standard SJ/T 11364-2014 it needs not to be marked with Environmentally Friendly Use Period (EFUP) label. This product should be recycled after its environmental protection use period has expired because it may contain substances or elements as shown in the following table:

Part Name	Hazardous Substance					
	Lead (Pb)	Mercury (Hg)	Cadmium (Cd)	Hexavalent Chromium (Cr(VI))	Polybrominated biphenyls (PBB)	Polybrominated diphenyl ethers (PBDE)
Connectors	0	0	0	0	0	0

This table is prepared in accordance with the provisions of SJ/T 11364.

O: Indicates that said hazardous substance contained in all of the homogeneous materials for this part is below the limit requirement of GB/T 26572

X: Indicates that said hazardous substance contained in at least one of the homogeneous materials used for this part is above the limit requirement of GB/T 26572

The table shows where these substances may be found in this Electrical and Electronic Product.

Please refer any questions to our Product Compliance Team:

Product-Compliance@binder-connector.de

# Certificate of Compliance

**Certificate Number:**

UL-US-L302391-081122-72402102-7

**Report Reference:**

E302391-20120427

**Issue Date:**

2025-04-03

Issued to:

**Franz Binder GmbH & Co. Elektrische Bauelemente KG**  
**Roetelstrasse 27 Neckarsulm 74172**  
**Germany**

This certificate confirms that representative samples of:

**CYJV - Cable Assemblies and Fittings for Industrial Control and Signal Distribution**

**See Addendum Page for Product Designation(s).**

Have been evaluated by UL in accordance with the Standard(s) indicated on this Certificate.

**UL 2238, Edition 3, Issue Date 2018-10-02, Revision Date 2024-12-05**

Additional Information:

See UL Product iQ® at <https://iq.ulprospector.com> for additional information.

This Certificate of Compliance indicates that representative samples of the product described in the certification report have met the requirements for UL certification. It does not provide authorization to apply the UL Mark. Only the Authorization Page that references the Follow-Up Services Procedure for ongoing surveillance provides authorization to apply the UL Mark.

Only those products bearing the UL Mark should be considered as being UL Certified and covered under UL's Follow-Up Services.

Look for the UL Certification Mark on the product.



A handwritten signature in black ink that reads 'David Piecuch'.

David Piecuch  
UL Mark Certification Program Owner

# CERTIFICATE OF COMPLIANCE

Certificate number UL-US-L302391-081122-72402102-7  
Report reference E302391-20120427  
Date 2025-04-03

This is to certify that representative samples of the product as specified on this certificate were tested according to the current UL requirements.

## Cable Assemblies

**Model(s):** 79 3429 285 03, 79 3429 307 04, 79 3429 340 04, 79 3429 362 04, 79 3429 364 04, 79 3429 367 04, 79 3429 372 04, 79 3429 373 04, 79 3429 376 04, 79 3429 378 04, 79 3429 389 04, 79 3429 411 04, 79 3429 412 04, 79 3429 416 04, 79 3429 526 04, 79 3429 529 04, 79 3429 534 04, 79 3429 553 04, 79 3429 669 04, 79 3429 738 04, 79 3429 779 04, 79 3429 780 04, 79 3429 795 04, 79 3429 796 04, 79 3429 809 04, 79 3429 830 04, 79 3529 320 04, 79 3529 321 04, 79 5203 04 03, 79 5203 10 03, 79 5203 110 03, 79 5203 113 03, 79 5214 104 03, 79 5214 110 03, 79 5215 112 03, 79 5215 55 03, Series 876 – D-coded 4529, 4527, 4557 and 4559

**Model(s):** Series 718-763 (M8-M12) Cat. No. 77, 3208, 3403, 3405, 3406, 3408, 3608 3703, 3705, 3706, 3708, 3808, 2827, 2829, 2830, 2834, 2927, 2929, 2930, 2934, 3030, 3034, 3134, 3227, 3229, 3230, 3234, 3327, 3329, 3330, 3334, 3427, 3429, 3430, 3434, 3627, 3629, 3630, 3634, 3727, 3729, 3730, 3734, 3827, 3829, 3830, 3834, 3930, 3934, 4627, 4629, 5134, 4029, 4027, 4030, 4034 or 5108 followed by 3403, 3405, 3406, 3408, 3608, 3208, 3703, 3705, 3706, 3708, 3808, 2827, 2829, 2830, 2834, 2927, 2929, 2930, 2934, 3030, 3034, 3134, 3227, 3229, 3230, 3234, 3327, 3329, 3330, 3334, 3427, 3429, 3430, 3434, 3627, 3629, 3630, 3634, 3727, 3729, 3730, 3734, 3827, 3829, 3830, 3834, 3930, 3934, 4627, 4629 or 5134, followed by 2, 3, 4, 5, 6, 7 or 8, followed by 00, 01, 03, 10, 12, 13, 20 or 30, followed by 03 or 04, followed by any four digits (XXXX).

**Model(s):** Series 763, 766, 866 or 876, Cat. No. 77 followed by 2527, 2529, 2727, 2729, 2827, 2829, 2927, 2929, 3227, 3229, 3327, 3329, 3417, 3419, 3427, 3429, 8127, 8129, 3527, 3529, 2627, 2629, 3627, 3629, 3727, 3729, 3827, 3829, 4027, 4029, 4227, 4229, 4327, 4329, 4427, 4429, 4527, 4529, 4557, 4559, 4627, 4629, 4703, 4705, 4727, 4729, 4827, 4829, 4927, 4929, 2530, 2534, 2730, 2734, 2830, 2834, 2930, 2934, 3030, 3034, 3134, 3230, 3234, 3330, 3334, 3420, 3424, 3430, 3434, 8130, 8134, 3530, 3534, 3630, 3634, 3730, 3734, 3830, 3834, 3930, 3934, 4030, 4034, 4230, 4234, 4330, 4334, 4430, 4434, 4530, 4554, 4550, 4534, 4630, 4634, 4706, 4708, 4730, 4734, 4830, 4834, 4930, 4934 or 5134, followed by 2530, 2534, 2730, 2734, 2830, 2834, 2930, 2934, 3030, 3034, 3134, 3230, 3234, 3330, 3334, 3420, 3424, 3430, 3434, 8130, 8134, 3530, 3534, 2630, 2634, 3630, 3634, 3730, 3734, 3830, 3834, 3930, 3934, 4030, 4034, 4230, 4234, 4330, 4334, 4430, 4434, 4530, 4534, 4554, 4550, 4630, 4634, 4706, 4708, 4730, 4734, 4830, 4834, 4930, 4934, 5134, 2527, 2529, 2727, 2729, 2827, 2829, 2927, 2929, 3227, 3229, 3327, 3329, 3417, 3419, 3427, 3429, 3527, 3529, 3627, 3629, 3727, 3729, 3827, 3829, 4027, 4029, 4227, 4229, 4327, 4329, 4427, 4429, 4527, 4529, 4627, 4557, 4559, 4629, 4703, 4705, 4727, 4729, 4827, 4829, 4927 or 4929 followed by 2, 3, 4, 5, 6, 7 or 8, followed by 00, 01, 03, 07, 10, 11, 12, 13, 17, 18, 20, 21, 22, 28, 30, 34, 37 or 39, followed by 02, 03, 04, 05, 08 or 12, followed by any four digits (XXXX).

## Cable Assemblies

**Model(s): Series 763, 766, 866 or 876, :** 77 followed by 2527, 2529, 2727, 2729, 2827, 2829, 2927, 2929, 3227, 3229, 3327, 3329, 3417, 3419, 3427, 3429, 8127, 8129, 3527, 3529, 2627, 2629, 3627, 3629, 3727, 3729, 3827, 3829, 4027, 4029, 4227, 4229, 4327, 4329, 4427, 4429, 4527, 4529, 4557, 4559, 4627, 4629, 4703, 4705, 4727, 4729, 4827, 4829, 4927, 4929, 2530, 2534, 2730, 2734, 2830, 2834, 2930, 2934, 3030, 3034, 3134, 3230, 3234, 3330, 3334, 3420, 3424, 3430, 3434, 8130, 8134, 3530, 3534, 3630, 3634, 3730, 3734, 3830, 3834, 3930, 3934, 4030, 4034, 4230, 4234, 4330, 4334, 4430, 4434, 4530, 4554, 4550, 4534, 4630, 4634, 4706, 4708, 4730, 4734, 4830, 4834, 4930, 4934 or 5134, followed by 2530, 2534, 2730, 2734, 2830, 2834, 2930, 2934, 3030, 3034, 3134, 3230, 3234, 3330, 3334, 3420, 3424, 3430, 3434, 8130, 8134, 3530, 3534, 2630, 2634, 3630, 3634, 3730, 3734, 3830, 3834, 3930, 3934, 4030, 4034, 4230, 4234, 4330, 4334, 4430, 4434, 4530, 4534, 4554, 4550, 4630, 4634, 4706, 4708, 4730, 4734, 4830, 4834, 4930, 4934, 5134, 2527, 2529, 2727, 2729, 2827, 2829, 2927, 2929, 3227, 3229, 3327, 3329, 3417, 3419, 3427, 3429, 3527, 3529, 3627, 3629, 3727, 3729, 3827, 3829, 4027, 4029, 4227, 4229, 4327, 4329, 4427, 4429, 4527, 4529, 4627, 4557, 4559, 4629, 4703, 4705, 4727, 4729, 4827, 4829, 4927 or 4929 followed by 2, 3, 4, 5, 6, 7 or 8, followed by 00, 01, 03, 07, 10, 11, 12, 13, 17, 18, 20, 21, 22, 28, 30, 34, 37 or 39, followed by 02, 03, 04, 05, 08 or 12, followed by any four digits (XXXX).

Any information and documentation involving UL Mark services are provided on behalf of UL LLC (UL) or any authorized licensee of UL. For questions, please contact UL Solutions Customer Service at <https://www.ul.com/contact-us>.



# CERTIFICATE OF COMPLIANCE

Certificate number UL-US-L302391-081122-72402102-7  
Report reference E302391-20120427  
Date 2025-04-03

## Cable assemblies

**Model(s): Series 763-870 (M12-7/8),** : 77, followed by 2527, 2529, 2530 or 2534 followed by 1527, 1529, 1530 or 1534 followed by 2, 5 or 6, followed by 00, 01, 07, 10, 11, 17, 20, 21, 30 or 37 followed by 05, followed by any four digits (XXXX).

## Cable assemblies, "Series 718-766 (M8-M12)"

**Model(s):** 79 3429 368 04

**Model(s):** 77 followed by 3108, 3208, 3403, 3405, 3406, 3408, 3608, 3703, 3705, 3706, 3708, 3808 2827, 2829, 2830, 2834, 2927, 2929, 2930, 2934, 3030, 3034, 3134, 3227, 3229, 3230, 3234, 3327, 3329, 3330, 3334, 3427, 3429, 3430, 3434, 3627, 3629, 3630, 3634, 3727, 3729, 3730, 3734, 3827, 3829, 3830, 3834, 3930, 3934, 4627, 4629, 5134, 4029, 4027, 4030, 4034 or 5108 followed by 3403, 3405, 3406, 3408, 3608, 3208, 3703, 3705, 3706, 3708, 3808, 2827, 2829, 2830, 2834, 2927, 2929, 2930, 2934, 3030, 3034, 3134, 3227, 3229, 3230, 3234, 3327, 3329, 3330, 3334, 3427, 3429, 3430, 3434, 3627, 3629, 3630, 3634, 3727, 3729, 3730, 3734, 3827, 3829, 3830, 3834, 3930, 3934, 4627, 4629 or 5134, followed by 2, 3, 4, 5, 6, 7 or 8, followed by 00, 01, 03, 10, 12, 13, 20 or 30, followed by 03 or 04, followed by any four digits (XXXX)

## Cable assemblies, "Series 763"

**Model(s):** 77 followed by 9827, 9829, 9830, 9834, 9836 or 9838 followed by 9830, 9834, 9836, 9838, 9827 or 9829 followed by 2, 3, 4, 6, 7 or 8 followed by 03 or 13 followed by 03, 04 or 05 followed by any four digits (XXXX).

## Cable assemblies, "Series 765 (M12-2xM8/M12)"

**Model(s):** 77 followed by 9827, 9829, 9830, 9831, 9832, 9857, 9867, 9868, 9875, 9877 or 9885 followed by 3403, 3405, 3406, 3408, 3608, 3208, 3703, 3705, 3706, 3708, 3808, 2530, 2534, 2830, 2834, 2930, 2934, 3030, 3034, 3134, 3230, 3234, 3330, 3334, 3430, 3434, 3630, 3634, 3730, 3734, 3830, 3834, 3930, 3934, 4230, 4234, 4430, 4434, 4630, 4634, 4706, 4708, 4730, 4734, 4830, 4834, 5134, 2527, 2529, 2827, 2829, 2927, 2929, 3227, 3229, 3327, 3329, 3427, 3429, 3627, 3629, 3727, 3729, 3827, 3829, 4227, 4229, 4427, 4429, 4627, 4629, 4703, 4705, 4727, 4729, 4827, 4829 or 4927 followed by 2, 3, 4, 5, 6, 7 or 8 followed by 00, 01, 03, 07, 10, 11, 12, 13, 17, 18, 20, 21, 22, 28, 30 or 37 followed by 03, 04 or 05 followed by any four digits (XXXX).

## Cable assemblies, "Series 765 (M8-2xM8/M12)"

**Model(s):** 77 followed by 9805 or 9806 followed by 3403, 3405, 3406, 3408, 3608, 3208, 3703, 3705, 3706, 3708, 3808, 2530, 2534, 2830, 2834, 2930, 2934, 3030, 3034, 3134, 3230, 3234, 3330, 3334, 3430, 3434, 3630, 3634, 3730, 3734, 3830, 3834, 3930, 3934, 4230, 4234, 4430, 4434, 4630, 4634, 4706, 4708, 4730, 4734, 4830, 4834, 5134, 2527, 2529, 2827, 2829, 2927, 2929, 3227, 3229, 3327, 3329, 3427, 3429, 3627, 3629, 3727, 3729, 3827, 3829, 4227, 4229, 4427, 4429, 4627, 4629, 4703, 4705, 4727, 4729, 4827, 4829 or 4927 followed by 2, 3, 4, 5, 6, 7 or 8 followed by 00, 01, 03, 07, 10, 11, 12, 13, 17, 18, 20, 21, 22, 28, 30, 34, 37 or 39, followed by 03, 04 or 05 followed by any four digits (XXXX)

## Cable assemblies, "Series F&B"

**Model(s):** 77 followed by 3730 or 3734, followed by 3729 or 3727

## Female Cable Fittings

**Model(s): Series 766,** : 77 followed by 4230, 4234, 4330, 4334, 4430, 4434, 4930 or 4934 followed by 0000, 9898, followed by 2, 3, 4, 5, 6, 7 or 8 followed by 00, 01, 03, 07, 10, 11, 12, 13, 17, 18, 20, 21, 30, 34, 37 or 39, followed by 02, 03, 04 or 05, followed by any four digits (XXXX).

## Female cable fittings, "Double Series 765"

**Model(s):** 77 followed by 9806, 9830, 9832 or 9868

## Female cable fittings, "Series 763"

**Model(s):** Series 766, Cat. No. 77



Any information and documentation involving UL Mark services are provided on behalf of UL LLC (UL) or any authorized licensee of UL. For questions, please contact UL Solutions Customer Service at <https://www.ul.com/contact-us>.

# CERTIFICATE OF COMPLIANCE

Certificate number UL-US-L302391-081122-72402102-7  
Report reference E302391-20120427  
Date 2025-04-03

**Model(s):** 77, followed by 2530 2534, 2730, 2734, 2830, 2834, 2930, 2934, 3420, 3424, 3030, 3034, 3134, 3230, 3234, 3330, 3334, 3430, 3434, 8130, 8134, 3530, 3534, 2630, 2634, 3630, 3634, 3730, 3734, 3830, 3834, 3930, 3934, 4030, 4034, 4630, 4634 or 5134, followed by 0000, 9898, followed by 2, 3, 4, 5, 6, 7 or 8 followed by 00, 01, 03, 07, 10, 11, 12, 13, 17, 18, 20, 21, 22, 28, 30, 34, 37 or 39, followed by 03, 04, 05, 08 or 12, followed by any four digits (XXXX).

**Female cable fittings, "Series 763",**

**Model(s):** 77 followed by 9830, 9834, 9836 or 9838 followed by 0000, 9898, followed by 2, 3, 4, 6, 7 or 8 followed by 03 or 13 followed by 03, 04 or 05 followed by any four digits (XXXX).

**Female cable fittings, "Series 866"**

**Model(s):** 77, followed by 4706, 4708, 4730, 4734, 4830 or 4834 followed by 0000, 9898, followed by 2, 3, 4, 5, 6, 7 or 8 followed by 00, 01, 03, 07, 10, 11, 12, 13, 17, 18, 20, 21, 30, 34, 37 or 39, followed by 03, 04 or 05, followed by any four digits (XXXX).

**Female cable fittings, "Series 876"**

**Model(s):** 77, followed by 4530 or 4534 4550 or 4554, followed by 0000, 9898, followed by 2, 3, 4, 5, 6, 7 or 8 followed by 00, 01, 03, 07, 10, 11, 12, 13, 17, 18, 20, 21, 30, 34, 37 or 39, followed by 03, 04, 05 or 08, followed by any four digits (XXXX).

**Female cable fittings, "Series F&B"**

**Model(s):** 77 followed by 3730 or 3734, followed by 0000, 9898

**Male cable fittings, "Double Series 765"**

**Model(s):** 77 followed by 9805, 9827, 9829, 9831, 9857, 9867, 9875, 9877, 9885 9853, 9855, followed by 0000, 9898, followed by 2, 3, 4, 5, 6, 7 or 8 followed by 00 followed by 03, 04 or 05 followed by any four digits (XXXX).

**Male cable fittings, "Series 763"**

**Model(s):** 77, followed by 2527 2529, 2727, 2729, 2827, 2829, 2927, 2929, 3227, 3229, 3327, 3329, 3417, 3419, 3427, 3429, 8127, 8129, 3527, 3529, 3627, 3629, 3727, 3729, 3827, 3829, 4027, 4029, 4627 or 4629, followed by 0000, 9898, followed by 2, 3, 4, 5, 6, 7 or 8, followed by 00, 01, 03, 07, 10, 11, 12, 13, 17, 18, 20, 21, 22, 28, 30 34, 37 or 39, followed by 03, 04, 05, 08 or 12, followed by any four digits (XXXX).

**Male cable fittings, "Series 763",**

**Model(s):** 77 followed by 9827 or 9829 followed by 0000, 9898, followed by 2, 3, 4, 6, 7 or 8 followed by 03 or 13 followed by 03, 04 or 05 followed by any four digits (XXXX).

**Male cable fittings, "Series 766"**

**Model(s):** 77, followed by 4227, 4229, 4327, 4329, 4427, 4429, 4927 or 4929 followed by 0000, 9898, followed by 2, 3, 4, 5, 6, 7 or 8, followed by 00, 01, 03, 07, 10, 11, 12, 13, 17, 18, 20, 21, 30, 34, 37 or 39, followed by 02, 03, 04 or 05, followed by any four digits (XXXX).

**Male cable fittings, "Series 866"**

**Model(s):** 77, followed by 4703, 4705, 4727, 4729, 4827 or 4829 followed by 0000, 9898, followed by 2, 3, 4, 5, 6, 7 or 8, followed by 00, 01, 03, 07, 10, 11, 12, 13, 17, 18, 20, 21, 30, 34, 37 or 39, followed by 03, 04 or 05, followed by any four digits (XXXX).

**Male cable fittings, "Series 876"**

**Model(s):** 77, followed by 4527 or 4529 4557 or 4559, followed by 0000, 9898, followed by 2, 3, 4, 5, 6, 7 or 8, followed by 00, 01, 03, 07, 10, 11, 12, 13, 17, 18, 20, 21, 30, 34, 37 or 39, followed by 03, 04, 05 or 08 followed by any four digits (XXXX).

**Male cable fittings, "Series F&B"**



Any information and documentation involving UL Mark services are provided on behalf of UL LLC (UL) or any authorized licensee of UL. For questions, please contact UL Solutions Customer Service at <https://www.ul.com/contact-us>.

# CERTIFICATE OF COMPLIANCE

**Certificate number** UL-US-L302391-081122-72402102-7  
**Report reference** E302391-20120427  
**Date** 2025-04-03

**Model(s):** 77 followed by 3729 or 3727 followed by 0000, 9898, followed by 2 followed by 04 or 09, followed by 03, 04, 05, 08 or 12, followed by any four digits (XXXX).



Any information and documentation involving UL Mark services are provided on behalf of UL LLC (UL) or any authorized licensee of UL. For questions, please contact UL Solutions Customer Service at <https://www.ul.com/contact-us>.

# Certificate of Compliance

**Certificate Number:**

UL-CA-L302391-081422-  
72402102-7

**Report Reference:**

E302391-20120427

**Issue Date:**

2025-04-03

Issued to:

**Franz Binder GmbH & Co. Elektrische Bauelemente KG**  
**Roetelstrasse 27 Neckarsulm 74172**  
**Germany**

This certificate confirms that representative samples of:

**CYJV7 - Cable Assemblies and Fittings for Industrial Control and Signal Distribution Certified for Canada**

**See Addendum Page for Product Designation(s).**

Have been evaluated by UL in accordance with the Standard(s) indicated on this Certificate.

**CSA C22.2 No. 182.3, 2nd Ed., Issue Date: 2016-07, Revision Date: 2021-5**

Additional Information:

See UL Product iQ® at <https://iq.ulprospector.com> for additional information.

This Certificate of Compliance indicates that representative samples of the product described in the certification report have met the requirements for UL certification. It does not provide authorization to apply the UL Mark. Only the Authorization Page that references the Follow-Up Services Procedure for ongoing surveillance provides authorization to apply the UL Mark.

Only those products bearing the UL Mark should be considered as being UL Certified and covered under UL's Follow-Up Services.

Look for the UL Certification Mark on the product.



A handwritten signature in black ink that reads 'David Piecuch'.

David Piecuch  
UL Mark Certification Program Owner

Any information and documentation involving UL Mark services are provided on behalf of UL LLC (UL) or any authorized licensee of UL. For questions, please contact UL Solutions Customer Service at <https://www.ul.com/contact-us>.

# CERTIFICATE OF COMPLIANCE

Certificate number UL-CA-L302391-081422-72402102-7  
Report reference E302391-20120427  
Date 2025-04-03

This is to certify that representative samples of the product as specified on this certificate were tested according to the current UL requirements.

## Cable Assemblies

**Model(s):** 79 3429 285 03, 79 3429 307 04, 79 3429 340 04, 79 3429 362 04, 79 3429 364 04, 79 3429 367 04, 79 3429 372 04, 79 3429 373 04, 79 3429 376 04, 79 3429 378 04, 79 3429 389 04, 79 3429 411 04, 79 3429 412 04, 79 3429 416 04, 79 3429 526 04, 79 3429 529 04, 79 3429 534 04, 79 3429 553 04, 79 3429 669 04, 79 3429 738 04, 79 3429 779 04, 79 3429 780 04, 79 3429 795 04, 79 3429 796 04, 79 3429 809 04, 79 3429 830 04, 79 3529 320 04, 79 3529 321 04, 79 5203 04 03, 79 5203 10 03, 79 5203 110 03, 79 5203 113 03, 79 5214 104 03, 79 5214 110 03, 79 5215 112 03, 79 5215 55 03, Series 876 – D-coded 4529, 4527, 4557 and 4559

**Model(s):** Series 718-763 (M8-M12) Cat. No. 77, 3208, 3403, 3405, 3406, 3408, 3608 3703, 3705, 3706, 3708, 3808, 2827, 2829, 2830, 2834, 2927, 2929, 2930, 2934, 3030, 3034, 3134, 3227, 3229, 3230, 3234, 3327, 3329, 3330, 3334, 3427, 3429, 3430, 3434, 3627, 3629, 3630, 3634, 3727, 3729, 3730, 3734, 3827, 3829, 3830, 3834, 3930, 3934, 4627, 4629, 5134, 4029, 4027, 4030, 4034 or 5108 followed by 3403, 3405, 3406, 3408, 3608, 3208, 3703, 3705, 3706, 3708, 3808, 2827, 2829, 2830, 2834, 2927, 2929, 2930, 2934, 3030, 3034, 3134, 3227, 3229, 3230, 3234, 3327, 3329, 3330, 3334, 3427, 3429, 3430, 3434, 3627, 3629, 3630, 3634, 3727, 3729, 3730, 3734, 3827, 3829, 3830, 3834, 3930, 3934, 4627, 4629 or 5134, followed by 2, 3, 4, 5, 6, 7 or 8, followed by 00, 01, 03, 10, 12, 13, 20 or 30, followed by 03 or 04, followed by any four digits (XXXX).

**Model(s):** Series 763, 766, 866 or 876, Cat. No. 77 followed by 2527, 2529, 2727, 2729, 2827, 2829, 2927, 2929, 3227, 3229, 3327, 3329, 3417, 3419, 3427, 3429, 8127, 8129, 3527, 3529, 2627, 2629, 3627, 3629, 3727, 3729, 3827, 3829, 4027, 4029, 4227, 4229, 4327, 4329, 4427, 4429, 4527, 4529, 4557, 4559, 4627, 4629, 4703, 4705, 4727, 4729, 4827, 4829, 4927, 4929, 2530, 2534, 2730, 2734, 2830, 2834, 2930, 2934, 3030, 3034, 3134, 3230, 3234, 3330, 3334, 3420, 3424, 3430, 3434, 8130, 8134, 3530, 3534, 3630, 3634, 3730, 3734, 3830, 3834, 3930, 3934, 4030, 4034, 4230, 4234, 4330, 4334, 4430, 4434, 4530, 4554, 4550, 4534, 4630, 4634, 4706, 4708, 4730, 4734, 4830, 4834, 4930, 4934 or 5134, followed by 2530, 2534, 2730, 2734, 2830, 2834, 2930, 2934, 3030, 3034, 3134, 3230, 3234, 3330, 3334, 3420, 3424, 3430, 3434, 8130, 8134, 3530, 3534, 2630, 2634, 3630, 3634, 3730, 3734, 3830, 3834, 3930, 3934, 4030, 4034, 4230, 4234, 4330, 4334, 4430, 4434, 4530, 4534, 4554, 4550, 4630, 4634, 4706, 4708, 4730, 4734, 4830, 4834, 4930, 4934, 5134, 2527, 2529, 2727, 2729, 2827, 2829, 2927, 2929, 3227, 3229, 3327, 3329, 3417, 3419, 3427, 3429, 3527, 3529, 3627, 3629, 3727, 3729, 3827, 3829, 4027, 4029, 4227, 4229, 4327, 4329, 4427, 4429, 4527, 4529, 4627, 4557, 4559, 4629, 4703, 4705, 4727, 4729, 4827, 4829, 4927 or 4929 followed by 2, 3, 4, 5, 6, 7 or 8, followed by 00, 01, 03, 07, 10, 11, 12, 13, 17, 18, 20, 21, 22, 28, 30, 34, 37 or 39, followed by 02, 03, 04, 05, 08 or 12, followed by any four digits (XXXX).

## Cable Assemblies

**Model(s): Series 763, 766, 866 or 876, :** 77 followed by 2527, 2529, 2727, 2729, 2827, 2829, 2927, 2929, 3227, 3229, 3327, 3329, 3417, 3419, 3427, 3429, 8127, 8129, 3527, 3529, 2627, 2629, 3627, 3629, 3727, 3729, 3827, 3829, 4027, 4029, 4227, 4229, 4327, 4329, 4427, 4429, 4527, 4529, 4557, 4559, 4627, 4629, 4703, 4705, 4727, 4729, 4827, 4829, 4927, 4929, 2530, 2534, 2730, 2734, 2830, 2834, 2930, 2934, 3030, 3034, 3134, 3230, 3234, 3330, 3334, 3420, 3424, 3430, 3434, 8130, 8134, 3530, 3534, 3630, 3634, 3730, 3734, 3830, 3834, 3930, 3934, 4030, 4034, 4230, 4234, 4330, 4334, 4430, 4434, 4530, 4554, 4550, 4534, 4630, 4634, 4706, 4708, 4730, 4734, 4830, 4834, 4930, 4934 or 5134, followed by 2530, 2534, 2730, 2734, 2830, 2834, 2930, 2934, 3030, 3034, 3134, 3230, 3234, 3330, 3334, 3420, 3424, 3430, 3434, 8130, 8134, 3530, 3534, 2630, 2634, 3630, 3634, 3730, 3734, 3830, 3834, 3930, 3934, 4030, 4034, 4230, 4234, 4330, 4334, 4430, 4434, 4530, 4534, 4554, 4550, 4630, 4634, 4706, 4708, 4730, 4734, 4830, 4834, 4930, 4934, 5134, 2527, 2529, 2727, 2729, 2827, 2829, 2927, 2929, 3227, 3229, 3327, 3329, 3417, 3419, 3427, 3429, 3527, 3529, 3627, 3629, 3727, 3729, 3827, 3829, 4027, 4029, 4227, 4229, 4327, 4329, 4427, 4429, 4527, 4529, 4627, 4557, 4559, 4629, 4703, 4705, 4727, 4729, 4827, 4829, 4927 or



Any information and documentation involving UL Mark services are provided on behalf of UL LLC (UL) or any authorized licensee of UL. For questions, please contact UL Solutions Customer Service at <https://www.ul.com/contact-us>.

© 2025 UL LLC. All rights reserved.  
Form-JLID-019496 – ver 1.0

# CERTIFICATE OF COMPLIANCE

Certificate number UL-CA-L302391-081422-72402102-7  
Report reference E302391-20120427  
Date 2025-04-03

4929 followed by 2, 3, 4, 5, 6, 7 or 8, followed by 00, 01, 03, 07, 10, 11, 12, 13, 17, 18, 20, 21, 22, 28, 30, 34, 37 or 39, followed by 02, 03, 04, 05, 08 or 12, followed by any four digits (XXXX).

## Cable assemblies

**Model(s): Series 763-870 (M12-7/8),** : 77, followed by 2527, 2529, 2530 or 2534 followed by 1527, 1529, 1530 or 1534 followed by 2, 5 or 6, followed by 00, 01, 07, 10, 11, 17, 20, 21, 30 or 37 followed by 05, followed by any four digits (XXXX).

## Cable assemblies, "Series 718-766 (M8-M12)"

**Model(s):** 79 3429 368 04

**Model(s):** 77 followed by 3108, 3208, 3403, 3405, 3406, 3408, 3608, 3703, 3705, 3706, 3708, 3808 2827, 2829, 2830, 2834, 2927, 2929, 2930, 2934, 3030, 3034, 3134, 3227, 3229, 3230, 3234, 3327, 3329, 3330, 3334, 3427, 3429, 3430, 3434, 3627, 3629, 3630, 3634, 3727, 3729, 3730, 3734, 3827, 3829, 3830, 3834, 3930, 3934, 4627, 4629, 5134, 4029, 4027, 4030, 4034 or 5108 followed by 3403, 3405, 3406, 3408, 3608, 3208, 3703, 3705, 3706, 3708, 3808, 2827, 2829, 2830, 2834, 2927, 2929, 2930, 2934, 3030, 3034, 3134, 3227, 3229, 3230, 3234, 3327, 3329, 3330, 3334, 3427, 3429, 3430, 3434, 3627, 3629, 3630, 3634, 3727, 3729, 3730, 3734, 3827, 3829, 3830, 3834, 3930, 3934, 4627, 4629 or 5134, followed by 2, 3, 4, 5, 6, 7 or 8, followed by 00, 01, 03, 10, 12, 13, 20 or 30, followed by 03 or 04, followed by any four digits (XXXX)

## Cable assemblies, "Series 763"

**Model(s):** 77 followed by 9827, 9829, 9830, 9834, 9836 or 9838 followed by 9830, 9834, 9836, 9838, 9827 or 9829 followed by 2, 3, 4, 6, 7 or 8 followed by 03 or 13 followed by 03, 04 or 05 followed by any four digits (XXXX).

## Cable assemblies, "Series 765 (M12-2xM8/M12)"

**Model(s):** 77 followed by 9827, 9829, 9830, 9831, 9832, 9857, 9867, 9868, 9875, 9877 or 9885 followed by 3403, 3405, 3406, 3408, 3608, 3208, 3703, 3705, 3706, 3708, 3808, 2530, 2534, 2830, 2834, 2930, 2934, 3030, 3034, 3134, 3230, 3234, 3330, 3334, 3430, 3434, 3630, 3634, 3730, 3734, 3830, 3834, 3930, 3934, 4230, 4234, 4430, 4434, 4630, 4634, 4706, 4708, 4730, 4734, 4830, 4834, 5134, 2527, 2529, 2827, 2829, 2927, 2929, 3227, 3229, 3327, 3329, 3427, 3429, 3627, 3629, 3727, 3729, 3827, 3829, 4227, 4229, 4427, 4429, 4627, 4629, 4703, 4705, 4727, 4729, 4827, 4829 or 4927 followed by 2, 3, 4, 5, 6, 7 or 8 followed by 00, 01, 03, 07, 10, 11, 12, 13, 17, 18, 20, 21, 22, 28, 30 or 37 followed by 03, 04 or 05 followed by any four digits (XXXX).

## Cable assemblies, "Series 765 (M8-2xM8/M12)"

**Model(s):** 77 followed by 9805 or 9806 followed by 3403, 3405, 3406, 3408, 3608, 3208, 3703, 3705, 3706, 3708, 3808, 2530, 2534, 2830, 2834, 2930, 2934, 3030, 3034, 3134, 3230, 3234, 3330, 3334, 3430, 3434, 3630, 3634, 3730, 3734, 3830, 3834, 3930, 3934, 4230, 4234, 4430, 4434, 4630, 4634, 4706, 4708, 4730, 4734, 4830, 4834, 5134, 2527, 2529, 2827, 2829, 2927, 2929, 3227, 3229, 3327, 3329, 3427, 3429, 3627, 3629, 3727, 3729, 3827, 3829, 4227, 4229, 4427, 4429, 4627, 4629, 4703, 4705, 4727, 4729, 4827, 4829 or 4927 followed by 2, 3, 4, 5, 6, 7 or 8 followed by 00, 01, 03, 07, 10, 11, 12, 13, 17, 18, 20, 21, 22, 28, 30, 34, 37 or 39, followed by 03, 04 or 05 followed by any four digits (XXXX)

## Cable assemblies, "Series F&B"

**Model(s):** 77 followed by 3730 or 3734, followed by 3729 or 3727

## Female Cable Fittings

**Model(s): Series 766,** : 77 followed by 4230, 4234, 4330, 4334, 4430, 4434, 4930 or 4934 followed by 0000, 9898, followed by 2, 3, 4, 5, 6, 7 or 8 followed by 00, 01, 03, 07, 10, 11, 12, 13, 17, 18, 20, 21, 30, 34, 37 or 39, followed by 02, 03, 04 or 05, followed by any four digits (XXXX).

## Female cable fittings, "Double Series 765"

**Model(s):** 77 followed by 9806, 9830, 9832 or 9868



Any information and documentation involving UL Mark services are provided on behalf of UL LLC (UL) or any authorized licensee of UL. For questions, please contact UL Solutions Customer Service at <https://www.ul.com/contact-us>.

© 2025 UL LLC. All rights reserved.  
Form-ULID-019496 – ver 1.0

# CERTIFICATE OF COMPLIANCE

Certificate number UL-CA-L302391-081422-72402102-7  
Report reference E302391-20120427  
Date 2025-04-03

## Female cable fittings, "Series 763"

**Model(s):** Series 766, Cat. No. 77

**Model(s):** 77, followed by 2530 2534, 2730, 2734, 2830, 2834, 2930, 2934, 3420, 3424, 3030, 3034, 3134, 3230, 3234, 3330, 3334, 3430, 3434, 8130, 8134, 3530, 3534, 2630, 2634, 3630, 3634, 3730, 3734, 3830, 3834, 3930, 3934, 4030, 4034, 4630, 4634 or 5134, followed by 0000, 9898, followed by 2, 3, 4, 5, 6, 7 or 8 followed by 00, 01, 03, 07, 10, 11, 12, 13, 17, 18, 20, 21, 22, 28, 30, 34, 37 or 39, followed by 03, 04, 05, 08 or 12, followed by any four digits (XXXX).

## Female cable fittings, "Series 763",

**Model(s):** 77 followed by 9830, 9834, 9836 or 9838 followed by 0000, 9898, followed by 2, 3, 4, 6, 7 or 8 followed by 03 or 13 followed by 03, 04 or 05 followed by any four digits (XXXX).

## Female cable fittings, "Series 866"

**Model(s):** 77, followed by 4706, 4708, 4730, 4734, 4830 or 4834 followed by 0000, 9898, followed by 2, 3, 4, 5, 6, 7 or 8 followed by 00, 01, 03, 07, 10, 11, 12, 13, 17, 18, 20, 21, 30, 34, 37 or 39, followed by 03, 04 or 05, followed by any four digits (XXXX).

## Female cable fittings, "Series 876"

**Model(s):** 77, followed by 4530 or 4534 4550 or 4554, followed by 0000, 9898, followed by 2, 3, 4, 5, 6, 7 or 8 followed by 00, 01, 03, 07, 10, 11, 12, 13, 17, 18, 20, 21, 30, 34, 37 or 39, followed by 03, 04, 05 or 08, followed by any four digits (XXXX).

## Female cable fittings, "Series F&B"

**Model(s):** 77 followed by 3730 or 3734, followed by 0000, 9898

## Male cable fittings, "Double Series 765"

**Model(s):** 77 followed by 9805, 9827, 9829, 9831, 9857, 9867, 9875, 9877, 9885 9853, 9855, followed by 0000, 9898, followed by 2, 3, 4, 5, 6, 7 or 8 followed by 00 followed by 03, 04 or 05 followed by any four digits (XXXX).

## Male cable fittings, "Series 763"

**Model(s):** 77, followed by 2527 2529, 2727, 2729, 2827, 2829, 2927, 2929, 3227, 3229, 3327, 3329, 3417, 3419, 3427, 3429, 8127, 8129, 3527, 3529, 3627, 3629, 3727, 3729, 3827, 3829, 4027, 4029, 4627 or 4629, followed by 0000, 9898, followed by 2, 3, 4, 5, 6, 7 or 8, followed by 00, 01, 03, 07, 10, 11, 12, 13, 17, 18, 20, 21, 22, 28, 30 34, 37 or 39, followed by 03, 04, 05, 08 or 12, followed by any four digits (XXXX).

## Male cable fittings, "Series 763",

**Model(s):** 77 followed by 9827 or 9829 followed by 0000, 9898, followed by 2, 3, 4, 6, 7 or 8 followed by 03 or 13 followed by 03, 04 or 05 followed by any four digits (XXXX).

## Male cable fittings, "Series 766"

**Model(s):** 77, followed by 4227, 4229, 4327, 4329, 4427, 4429, 4927 or 4929 followed by 0000, 9898, followed by 2, 3, 4, 5, 6, 7 or 8, followed by 00, 01, 03, 07, 10, 11, 12, 13, 17, 18, 20, 21, 30, 34, 37 or 39, followed by 02, 03, 04 or 05, followed by any four digits (XXXX).

## Male cable fittings, "Series 866"

**Model(s):** 77, followed by 4703, 4705, 4727, 4729, 4827 or 4829 followed by 0000, 9898, followed by 2, 3, 4, 5, 6, 7 or 8, followed by 00, 01, 03, 07, 10, 11, 12, 13, 17, 18, 20, 21, 30, 34, 37 or 39, followed by 03, 04 or 05, followed by any four digits (XXXX).

## Male cable fittings, "Series 876"



Any information and documentation involving UL Mark services are provided on behalf of UL LLC (UL) or any authorized licensee of UL. For questions, please contact UL Solutions Customer Service at <https://www.ul.com/contact-us>.

# CERTIFICATE OF COMPLIANCE

Certificate number UL-CA-L302391-081422-72402102-7  
Report reference E302391-20120427  
Date 2025-04-03

**Model(s):** 77, followed by 4527 or 4529 4557 or 4559, followed by 0000, 9898, followed by 2, 3, 4, 5, 6, 7 or 8, followed by 00, 01, 03, 07, 10, 11, 12, 13, 17, 18, 20, 21, 30, 34, 37 or 39, followed by 03, 04, 05 or 08 followed by any four digits (XXXX).

**Male cable fittings, "Series F&B"**

**Model(s):** 77 followed by 3729 or 3727 followed by 0000, 9898, followed by 2 followed by 04 or 09, followed by 03, 04, 05, 08 or 12, followed by any four digits (XXXX).



Any information and documentation involving UL Mark services are provided on behalf of UL LLC (UL) or any authorized licensee of UL. For questions, please contact UL Solutions Customer Service at <https://www.ul.com/contact-us>.

## EU DECLARATION OF CONFORMITY

Manufacturer	<b>Franz Binder GmbH &amp; Co. Elektrische Bauelemente KG Rötelstraße 27 D-74172 Neckarsulm</b>
Part no.	<b>77 3430 0000 20005-0200</b>
Product	
Series	<b>series 763</b>

This product complies with the requirements of the following European Directive:  
Directive 2014/35/EU of the European Parliament and of the council of 26 February 2014 on the harmonisation of the laws of the Member States relating to the making available on the market of electrical equipment designed for use within certain voltage limits (recast).

The following harmonized standards have been applied for conformity assessment:

EN 60529:1991;EN 60204-1:2018 \*)

\*) This standard is currently not harmonized

References to standards apply to references to their amendments, if these amendments are listed to the respective directives in the Official Journal of the European Union.

This declaration of conformity is issued under the sole responsibility of the manufacturer.

Neckarsulm, 2025-03-05



i.A. Soner Cakar  
Product Compliance Manager

## UKCA DECLARATION OF CONFORMITY

Manufacturer	<b>Franz Binder GmbH &amp; Co. Elektrische Bauelemente KG Rötelstraße 27 D-74172 Neckarsulm</b>
Object of the declaration	<b>Connector (COC)</b>
Product	<b>77 3430 0000 20005-0200</b>

The object of the declaration described above is in conformity with the relevant UK-Regulations and UK-Guidelines:

**The Electrical Equipment (Safety) Regulations 2016**  
STATUTORY INSTRUMENTS  
2016 No. 1101  
CONSUMER PROTECTION  
HEALTH AND SAFETY

References of standards and/ or technical specifications applied for this declaration of conformity, or parts thereof:

**2016 No. 1101: EN 61984:2009 \*)**

\*) This standard is currently not listed in the assigned directive.

This declaration is issued under the sole responsibility of the manufacturer.

Neckarsulm, 2025-03-05



i.A. Soner Cakar  
Product Compliance Manager

## EU DECLARATION OF CONFORMITY

Manufacturer	<b>Franz Binder GmbH &amp; Co. Elektrische Bauelemente KG Rötelstraße 27 D-74172 Neckarsulm</b>
Part no.	<b>77 3430 0000 20005-0200</b>
Product	
Series	<b>series 763</b>

This declaration of conformity is issued under the sole responsibility of the manufacturer.  
The object of the declaration described above is in conformity with Directive 2011/65/EU of the European Parliament and of the council of 8 June 2011 on the restriction of the use of certain hazardous substances in electrical and electronic equipment (recast).  
The following harmonized standards have been applied for conformity assessment:

EN 50581:2012 \*)

\*) This standard is currently not harmonized

References to standards apply to references to their amendments, if these amendments are listed to the respective directives in the Official Journal of the European Union.

Neckarsulm, 2021-07-27



i.A. Soner Cakar  
Product Compliance Manager

## UKCA DECLARATION OF CONFORMITY

Manufacturer	<b>Franz Binder GmbH &amp; Co. Elektrische Bauelemente KG Rötelstraße 27 D-74172 Neckarsulm</b>
Object of the declaration	<b>Connector (COC)</b>
Product	<b>77 3430 0000 20005-0200</b>

The object of the declaration described above is in conformity with the relevant UK-Regulations and UK-Guidelines:

**The Restriction of the use of Certain Hazardous Substances in Electrical and Electronic Equipment  
Regulations 2012**

STATUTORY INSTRUMENTS  
2012 No. 3032  
ENVIRONMENTAL PROTECTION

References of standards and/ or technical specifications applied for this declaration of conformity, or parts thereof:

**2012 No. 3032**: EN IEC 63000:2018

This declaration is issued under the sole responsibility of the manufacturer.

Neckarsulm, 2021-09-17



i.A. Soner Cakar  
Product Compliance Manager