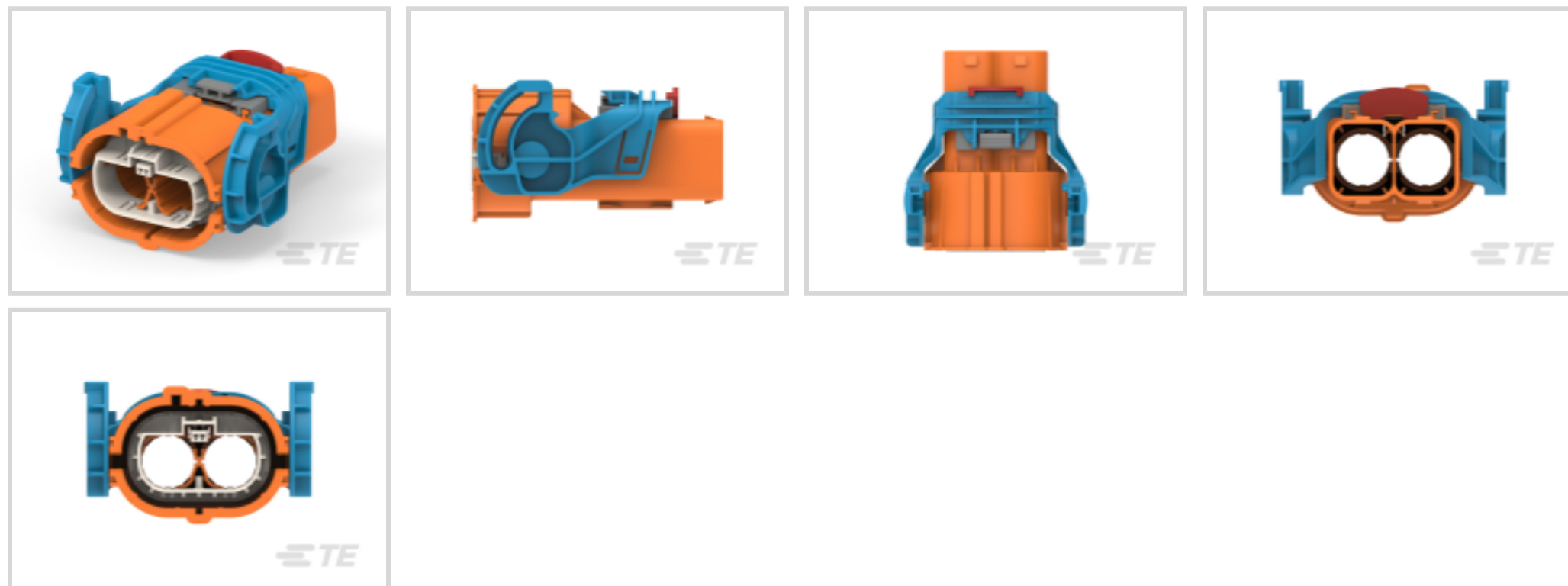




Connectors > Automotive Connectors > Automotive Housings



Number of Positions: 2

Connector & Housing Type: **Housing for Female Terminals**

Mating Tab Width: 1.2 mm [.047 in]

Mating Pin Diameter: 8 mm [.315 in]

Connector System: **Cable-to-Cable**

Features

Electrical Characteristics

Operating Voltage	1000 VDC
-------------------	----------

Contact Features

Contact Size	8mm, 1.2mm
Contact Type	Receptacle, Pin
Mating Tab Width	1.2 mm[.047 in]
Mating Pin Diameter	8 mm[.315 in]

Configuration Features

Number of Positions	2
Number of Rows	1

Product Type Features

Connector & Housing Type	Housing for Female Terminals
Connector System	Cable-to-Cable
Sealable	Yes
Primary Locking Feature	Integrated in Housing
Connector & Contact Terminates To	Wire & Cable



Body Features

Primary Product Color	Gray
Connector & Keying Code	A

Mechanical Attachment

Connector Mounting Type	Cable Mount (Free-Hanging)
-------------------------	----------------------------

Housing Features

Centerline (Pitch)	23 mm [.905 in]
--------------------	-----------------

Usage Conditions

Operating Temperature (Max)	140 °C [284 °F]
Operating Temperature Range	-40 – 140 °C [-40 – 284 °F]

Operation/Application

Circuit Application	Power
---------------------	-------

Other

Connector Position Assurance Capable	Yes
EU RoHS Compliance	Compliant
EU ELV Compliance	Compliant

Product Compliance

[For compliance documentation, visit the product page on TE.com>](#)

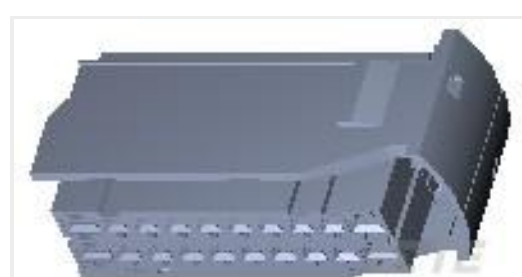
EU RoHS Directive 2011/65/EU	Compliant
EU ELV Directive 2000/53/EC	Compliant
China RoHS 2 Directive MIIT Order No 32, 2016	No Restricted Materials Above Threshold
EU REACH Regulation (EC) No. 1907/2006	Current ECHA Candidate List: JUNE 2024 (241) Candidate List Declared Against: JAN 2017 (173) SVHC > Threshold: Not Yet Reviewed
Halogen Content	BFR/CFR/PVC Free, but Br/Cl >900 ppm in other sources.
Solder Process Capability	Not reviewed for solder process capability

Product Compliance Disclaimer

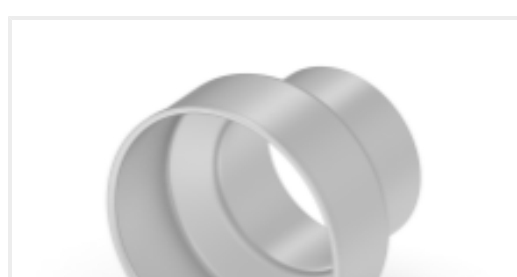
This information is provided based on reasonable inquiry of our suppliers and represents our current actual knowledge based on the information they provided. This information is subject to change. The part numbers that TE has identified as EU RoHS compliant have a maximum concentration of 0.1% by weight in homogenous materials for lead, hexavalent

chromium, mercury, PBB, PBDE, DBP, BBP, DEHP, DIBP, and 0.01% for cadmium, or qualify for an exemption to these limits as defined in the Annexes of Directive 2011/65/EU (RoHS2). Finished electrical and electronic equipment products will be CE marked as required by Directive 2011/65/EU. Components may not be CE marked. Additionally, the part numbers that TE has identified as EU ELV compliant have a maximum concentration of 0.1% by weight in homogenous materials for lead, hexavalent chromium, and mercury, and 0.01% for cadmium, or qualify for an exemption to these limits as defined in the Annexes of Directive 2000/53/EC (ELV). Regarding the REACH Regulations, TE's information on SVHC in articles for this part number is still based on the European Chemical Agency (ECHA) 'Guidance on requirements for substances in articles' (Version: 2, April 2011), applying the 0.1% weight on weight concentration threshold at the finished product level. TE is aware of the European Court of Justice ruling of September 10th, 2015 also known as O5A (Once An Article Always An Article) stating that, in case of 'complex object', the threshold for a SVHC must be applied to both the product as a whole and simultaneously to each of the articles forming part of its composition. TE has evaluated this ruling based on the new ECHA "Guidance on requirements for substances in articles" (June 2017, version 4.0) and will be updating its statements accordingly.

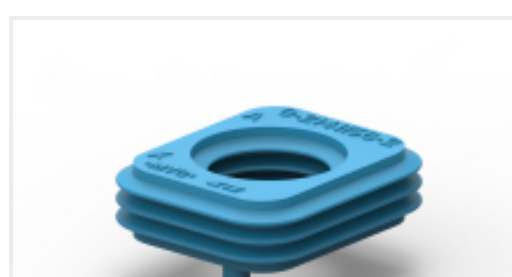
Customers Also Bought



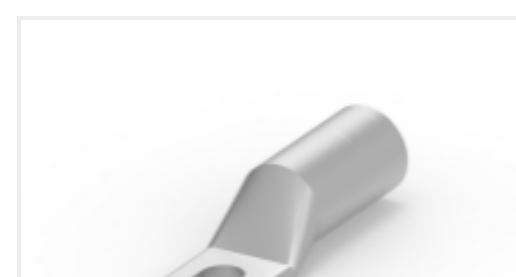
TE Part #284875-4
20 POS FEMALE CONN ASSY



TE Part #2177090-5
STEEL, OUTER FERRULE, 8MM HV,
35SQMM-JW



TE Part #2141156-5
SINGLE WIRE SEAL, 8MM HV, 90DEG



TE Part #3-1991233-3
RING TONGUE. 35 SQMM M6 STUD



TE Part #2141809-4
CONTACT KIT, BODY AND SPRING,



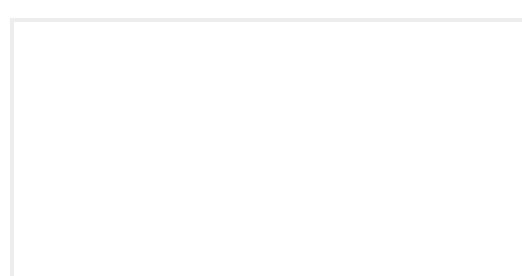
TE Part #9-2141157-5
SHIELD CRIMP FERRULE, 90DEG



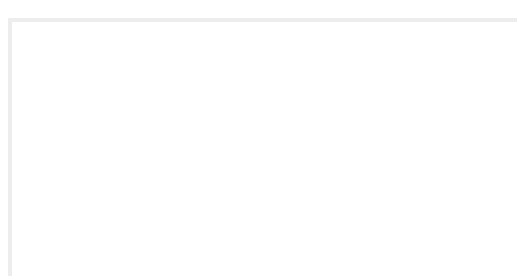
TE Part #282989-3
CONN. NEW GEN. F. TRUCK



TE Part #2303272-2
FINGER PROT CAP, 8MM HV, 90DEG,
UL94V0, GRAY



TE Part #1-1991226-1
1 POS. RING TONGUE HOUSING ASS



TE Part #2-2324108-7
1 POS, P2P, HDR ASSY, COD A, UL94V-0

Documents

Product Drawings

[2POS, 8MM HV, PLUG HSG, ASSY, SEALED](#)

English

[2POS, 8MM HV, PLUG HSG, ASSY, SEALED](#)

English

CAD Files



3D PDF

3D

Customer View Model

[ENG_CVM_CVM_5-2177053-2_A.2d_dxf.zip](#)

English

Customer View Model

[ENG_CVM_CVM_5-2177053-2_A.3d_igs.zip](#)

English

Customer View Model

[ENG_CVM_CVM_5-2177053-2_A.3d_stp.zip](#)

English

By downloading the CAD file I accept and agree to the [Terms and Conditions](#) of use.

Product Specifications

[Application Specification](#)

English