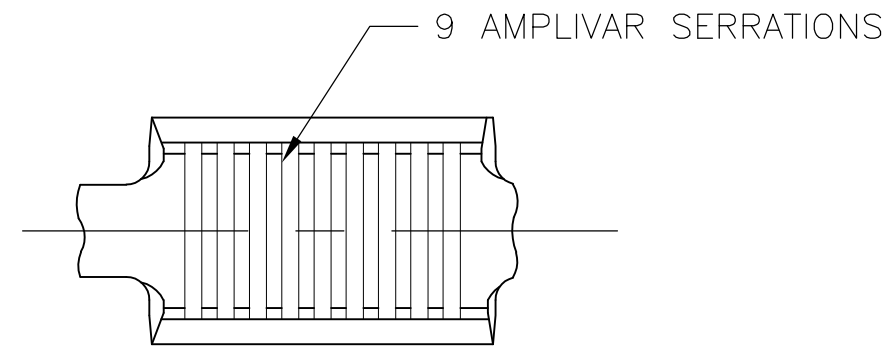
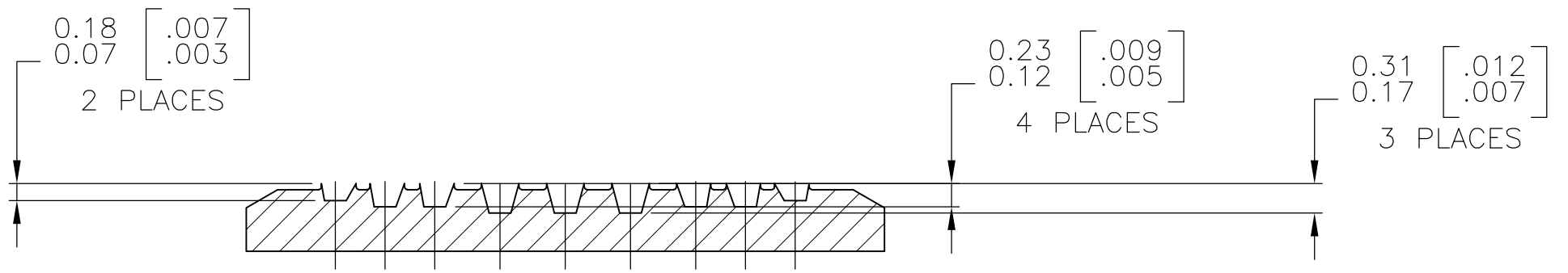
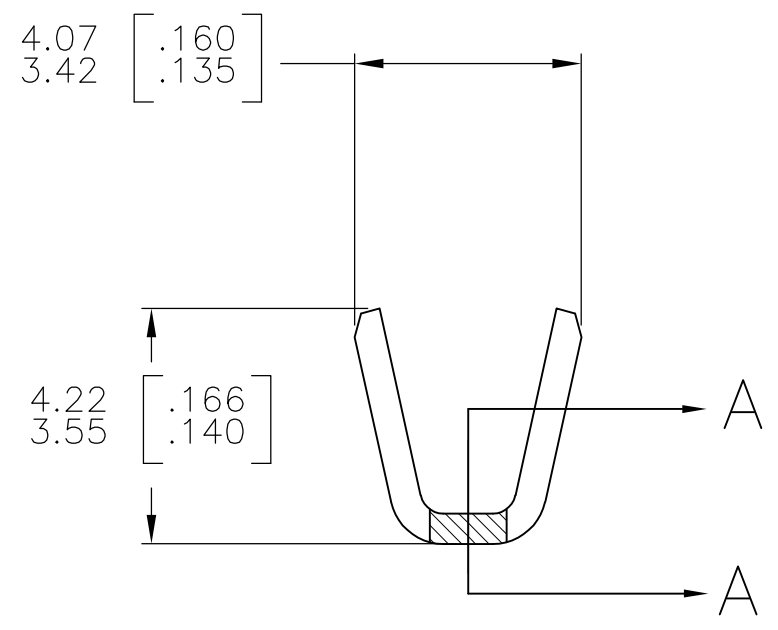
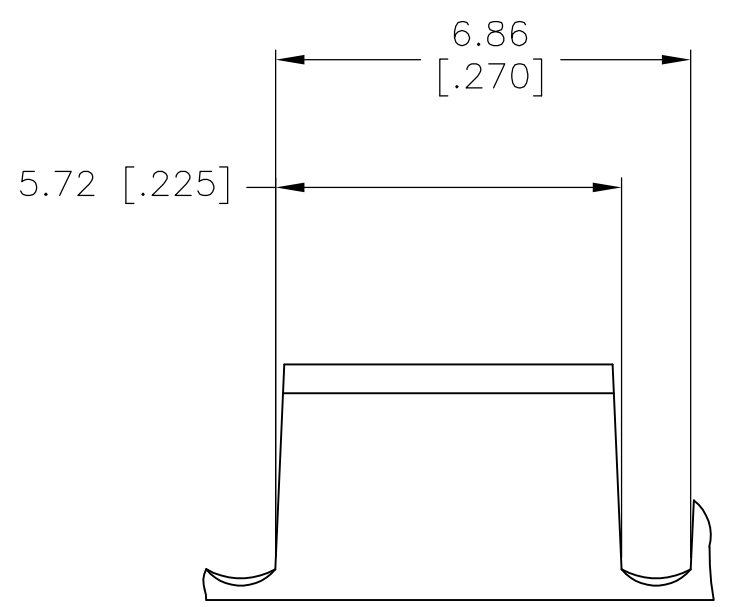


THIS DRAWING IS UNPUBLISHED. RELEASED FOR PUBLICATION  
 © COPYRIGHT - By -TE ALL RIGHTS RESERVED.

REVISIONS					
P	LTR	DESCRIPTION	DATE	DWN	APVD
	A	REVISED PER ECR-16-016163	21NOV2016	BW	RS



- CONTINUOUS STRIP ON REELS.
  - DIMENSIONS IN BRACKETS ARE IN INCHES.
  - WIRE RANGE: 1500-5000 CMA.
  - CRIMP WIDTH: .110 F (AMPLIVAR TYPE)  
 CRIMP HEIGHT (±.002)=(TOTAL CMA +10,700)/193,400  
 CRIMP WIDTH: .140 F (AMPLIVAR TYPE)  
 CRIMP HEIGHT (±.002)=(TOTAL CMA +11,100)/233,300
- GENERAL APPLICATION GUIDELINES MUST BE FOLLOWED AS SPECIFIED IN CATALOG # 82221  
 FOR APPLICATOR INFORMATION CALL: 1-800-722-1111  
 FOR PRODUCT INFORMATION CALL: 1-800-522-6752



SECTION A-A  
 SCALE 20:1

2238122-1  
 PART NO

THIS DRAWING IS A CONTROLLED DOCUMENT.		DWN R.SMITH 03MAY16	<b>STE</b> TE Connectivity		
DIMENSIONS: mm [INCHES]		CHK K.RANDOLPH 03MAY16			
TOLERANCES UNLESS OTHERWISE SPECIFIED:		APVD K.RANDOLPH 03MAY16	NAME		
0 PLC ± -		PRODUCT SPEC	-		
1 PLC ± -		APPLICATION SPEC	SPLICE, THRU, AMPLIVAR		
2 PLC ± -		WEIGHT 0	9 SERRATIONS		
3 PLC ± 0.38 [.015]		SIZE A3	CAGE CODE 00779	DRAWING NO C-2238122	RESTRICTED TO -
4 PLC ± -		CUSTOMER DRAWING			
ANGLES ± 1° 0'		SCALE 8:1	SHEET 1 OF 1	REV A	
MATERIAL REF 0.51±0.03 [.020±.001] BRASS	FINISH TIN PLATE				