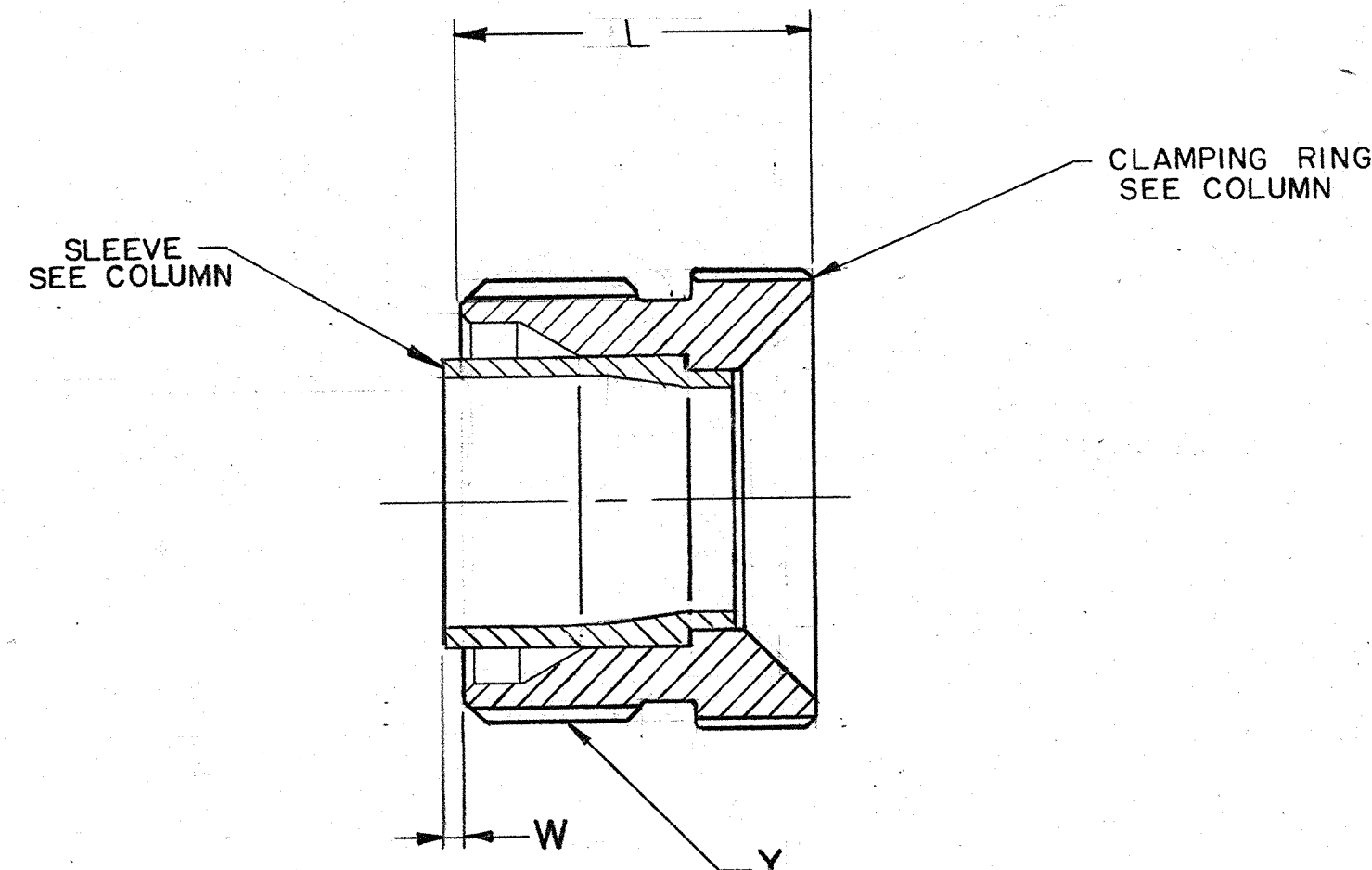
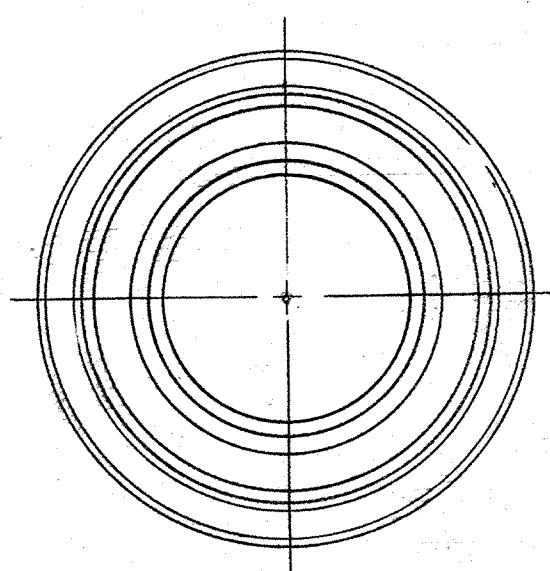


ASSEMBLY NUMBER	DETAILS		L +.0006 -.0005	Y THREAD REF CLASS 2A	W +.020 -.000	WT-LB	REL
	CLAMPING RING	SLEEVE					
10-330957-8	10-330958-8	10-454954-8	.500	.6250-24NEF	.000		53524-176
-10	-10	-10		.7500-20UNEF			38536-224
-12	-12	-12		.8750-20UNEF			
-14	-14	-14		1.0000-20UNEF			
-16	-16	-16		1.1250-18NEF			
-18	-18	-18		1.2500-18NEF			
-20	-20	-20	.531	1.3750-18NEF			
-22	-22	-22		1.5000-18NEF			
-24	-24	-24		1.6250-18NEF			

REL NO. 38536-224		REVISIONS		DATE	APPROVED
CHG NO.	SYM	DESCRIPTION			
52481	A <sub>1</sub>	(MFG); REV SLEEVE COL		1-5-71	<i>Randall</i>
-4					
53524-176	A <sub>2</sub>	REL -8 & DATA		1-7-72	HANNI
	B	(MFG) ADDED & REL - XX G & FINISH ECN 58500-232		7-21-77	<i>BOWLER</i>
74500-65	C	(CLII) ADDED & REL - XX G & FINISH		3-4-83	GRANDALL
80538	D	(CLII) ADDED & REL - XX Y & DATA		8-1-95	JED
83916	E	(CLII) ADDED & RELEASE - XXU & DATA		11-5-97	JED
85479	F	(CLII) ADDED & RELEASE - XXX & DATA		9-29-98	JED



THIS DOCUMENT CONTAINS INFORMATION OWNED BY THE BENDIX CORPORATION OR DEVELOPED AT ITS OWN PRIVATE EXPENSE AND MAY NOT BE USED, DUPLICATED OR DISCLOSED IN WHOLE OR IN PART FOR DESIGN, MANUFACTURE, OR PROCUREMENT WITHOUT THE WRITTEN PERMISSION OF THE BENDIX CORPORATION, SCINTILLA DIVISION. BY RETENTION OF THIS DOCUMENT, THE HOLDER AGREES THAT IT SHALL NOT BE USED IN ANY MANNER PROHIBITED HEREIN.

PARTS LIST MESSAGE RE-SPIN BY THE SCINTILLA CORP. DESIGN GROUP

1. TO COMPLETE ASSEMBLY NO. & DETAIL NO., ADD APPLICABLE LAST DIGIT SUFFIX NO. FOR DESIRED FINISH.
- |                             |            |
|-----------------------------|------------|
| CHROMATE TREATED            | SUFFIX-XX0 |
| BRIGHT CADMIUM PLATE        | SUFFIX-XX1 |
| BLACK ANODIZE               | SUFFIX-XX2 |
| CADMIUM PLATE (OLIVE DRAB)  | SUFFIX-XX3 |
| GRAY ANODIZE                | SUFFIX-XX4 |
| ANODIC COATING              | SUFFIX-XX5 |
| CADMIUM PLATE (NICKEL BASE) | SUFFIX-XX7 |
| NICKEL ALLOY PLATE          | SUFFIX-XX8 |
| OLIVE DRAB CADMIUM PLATE    | SUFFIX-XX9 |
| NICKEL BASE PLATE           | SUFFIX-XXY |
| BLACK ZINC ALLOY PLATE      | SUFFIX-XXU |
| GREEN ZINC ALLOY PLATE      | SUFFIX-XXV |
| BLACK ZINC CONDUCTIVE PLATE | SUFFIX-XXX |

NOTES: REF SYMBOL

ITEM NO.	QTY REQD	DESCRIPTION	PART NUMBER	CODE IDENT	ZONE	72-231706/50 & OTHERS
PARTS LIST						
UNLESS OTHERWISE SPECIFIED		DRAWN: J. ZUMMO	DATE: 4-2-62	 <b>SCINTILLA DIVISION</b> SIDNEY, NEW YORK, U.S.A.		
LINEAR DIMENSIONS ARE IN INCHES.		CHECKED: <i>J. Zummo</i>	DATE: 4-23-62			
TOLERANCES: 3 PLACES ± .010;		MATERIAL:				
2 PLACES ± .03; 1 PLACE ± .1;		STANDARDS: <i>J. Balanta</i>	DATE: 4-24-62			
ANGLES ± 2°. OTHER STANDARDS PER SCINTILLA SPEC 9-3800 AND MIL-STD 8.		(DRAFTING) <i>J. Zummo</i>	DATE: 4-24-62	TITLE: <b>RING, CLAMPING,          ELECTRICAL CONNECTOR,          TYPE PT - SE ( ) J,          ASSEMBLY OF</b>		
MATERIAL SPEC	PROCESS SPEC	ENGINEERING: <i>R. E. Bamhart</i>	DATE: 4-24-62			
		DEVELOPMENT:		CODE IDENT NO.	SIZE	77820 C 10-330957
				SCALE	WT	NONE
				REF	SHEET	

TAB.

10-330957 SCANNED